



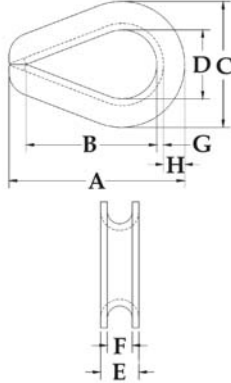
Wire Rope Thimbles

G-414 Heavy Duty Thimble

- Available in Hot Dip Galvanized or Stainless Steel.
- Stainless Steel recommended for more corrosive environments where greater protection is required.
- Greater protection against wear and deformation of the wire rope eye.
- Longer service life.



G414 Extra Heavy Wire Rope Thimbles



G-414 meets the performance requirements of Federal Specification FF-T-276b Type III, except for those provisions required of the contractor.

Rope Diameter		Stock Number		Weight Per 100 (lbs)	Dimensions (in.)							
(in.)	(mm)	G-414 Stock Number	SS-414 Stainless		A	B	C	D	E	F	G	H
*1/4	6-7	1037639	1037960	6.50	2.19	1.62	1.50	.88	.41	.28	.06	.25
*5/16	8	1037657	1037988	11.80	2.50	1.88	1.81	1.06	.50	.34	.08	.30
*3/8	9-10	1037675	1038004	21.60	2.88	2.12	2.12	1.12	.63	.41	.11	.39
7/16	11-12	1037693	-	34.70	3.25	2.38	2.38	1.25	.72	.47	.12	.45
*1/2-9/16	13-15	1037719	1038022	51.00	3.62	2.75	2.75	1.50	.89	.59	.15	.48
*5/8	16	1037755	1038040	75.70	4.25	3.25	3.12	1.75	1.00	.66	.16	.53
*3/4	18-20	1037773	1038068	158.10	5.00	3.75	3.81	2.00	1.22	.78	.22	.69
7/8	22	1037791	-	177.80	5.50	4.25	4.25	2.25	1.38	.94	.22	.78
1	24-26	1037817	-	313.90	6.12	4.50	4.75	2.50	1.56	1.06	.25	.88
1-1/8-1-1/4	28-32	1037835	-	400.00	7.00	5.12	5.88	2.88	1.88	1.31	.25	1.25
1-1/4-1-3/8	32-35	1037853	-	886.00	9.08	6.50	6.81	3.50	2.25	1.44	.37	1.29
1-3/8-1-1/2	35-38	1037871	-	1294.80	9.00	6.25	7.12	3.50	2.62	1.56	.50	1.31
1-5/8	40	1037899	-	1700.00	11.25	8.00	8.12	4.00	3.00	1.72	.50	1.38
1-3/4	44	1037915	-	1775.00	12.19	9.00	8.50	4.50	3.06	1.84	.50	1.50
1-7/8-2	48-52	1037933	-	2775.00	15.12	12.00	10.38	6.00	3.38	2.09	.50	1.69
2-1/4	56	1037951	-	3950.00	17.50	14.00	11.88	7.00	3.88	2.38	.62	1.82

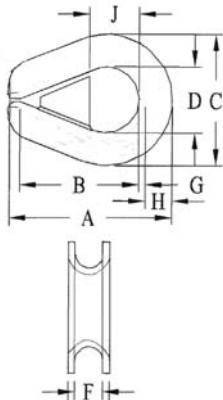
* SS-414 sizes available in stainless steel type 304.

G-414SL Heavy Duty Shackle-Loc Thimble

- Prevents the shackle from being removed and replaced in the field, which could compromise the certified integrity of the sling assembly.
- Available in Hot Dip galvanized.
- Crosby's shackle locking thimbles are galvanized after the welding of the wedge has been completed.
- Greater protection against wear and deformation of the wire rope eye.
- Longer service life.



Extra Heavy Wire Rope Thimbles (Shackle-Loc)



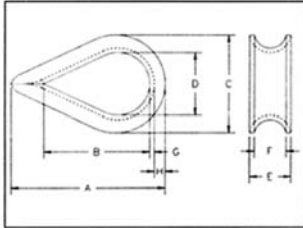
G-414SL meets the performance requirements of Federal Specification FF-T-276b Type III, except for those provisions required of the contractor.

Rope Diameter		Stock Number	Weight Per 100 (lbs)	Dimensions (in.)								
(in.)	(mm)	G-414SL Stock Number		A	B	C	D	E	F	G	H	J
3/8	9-10	1036800	21.60	2.88	2.12	2.12	1.12	.63	.41	.11	.39	.81
1/2-9/16	13-15	1036808	51.00	3.62	2.75	2.75	1.50	.89	.59	.15	.48	1.12
5/8	16	1036817	75.70	4.25	3.25	3.12	1.75	1.00	.66	.16	.53	1.25
3/4	18-20	1036826	158.10	5.00	3.75	3.81	2.00	1.22	.78	.22	.69	1.50
7/8	22	1036835	177.80	5.50	4.25	4.25	2.25	1.38	.94	.22	.78	1.63
1	24-26	1036844	313.90	6.12	4.50	4.75	2.50	1.56	1.06	.25	.88	1.88
1-1/8-1-1/4	28-32	1036853	400.00	7.00	5.12	5.88	2.88	1.88	1.31	.25	1.25	2.13
1-3/8-1-1/2	35-38	1036862	1294.80	9.00	6.25	7.12	3.50	2.62	1.56	.50	1.31	2.50



G-411 Standard Wire Rope Thimble

- The standard choice for light duty applications and loading conditions.
- Hot Dip galvanized steel.



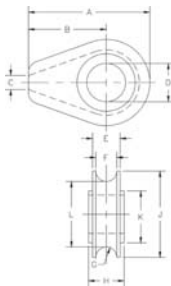
Rope Dia. (in.)	G-411 Stock Number Galv.	Weight Per 100 (lbs)	Dimensions (in.)							
			A	B	C	D	E	F	G	H
1/8	1037256	3.50	1.94	1.31	1.06	.69	.25	.16	.05	.13
3/16	1037274	3.50	1.94	1.31	1.06	.69	.31	.22	.05	.13
1/4	1037292	3.50	1.94	1.31	1.06	.69	.38	.28	.05	.13
5/16	1037318	4.00	2.13	1.50	1.25	.81	.44	.34	.05	.13
3/8	1037336	6.70	2.38	1.63	1.47	.94	.53	.41	.06	.16
1/2	1037354	12.50	2.75	1.88	1.75	1.13	.69	.53	.08	.19
5/8	1037372	34.50	3.50	2.25	2.38	1.38	.91	.66	.13	.34
3/4	1037390	47.10	3.75	2.50	2.69	1.63	1.08	.78	.14	.34
7/8	1037416	84.60	5.00	3.50	3.19	1.88	1.27	.94	.16	.44
1	1037434	97.50	5.69	4.25	3.75	2.50	1.39	1.06	.16	.41
1-1/8-1-1/4	1037452	175.00	6.25	4.50	4.31	2.75	1.75	1.31	.22	.50

G-411 meets the performance requirements of Federal Specification FF-T-276b Type II, except for those provisions required of the contractor.

FITTINGS & BLOCKS

S-412 Solid Wire Rope Thimbles

- Fits pin for open wire rope socket, boom pendant clevis and wedge socket.
- Cast Ductile Iron.

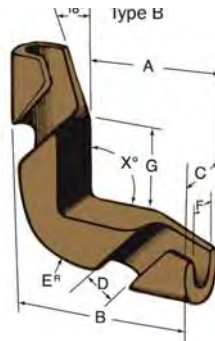


Rope Diameter (in.)	S-412 Stock Number S.C.	Weight Each (lbs)	Dimensions (in.)										
			A	B	C	D	E	F	G	H	J	K	L
1/2	1037121	.61	2.81	1.75	.25	1.06	.75	.56	.28	.88	2.13	1.63	1.56
5/8	1037149	2.21	4.69	3.00	.38	1.31	1.06	.81	.41	1.13	3.38	2.25	2.56
3/4	1037167	2.32	4.69	3.00	.38	1.50	1.06	.81	.41	1.38	3.38	2.25	2.56
7/8	1037185	5.45	6.06	3.81	.50	1.75	1.38	1.06	.53	1.63	4.50	3.25	3.44
1	1037201	5.25	6.06	3.81	.50	2.13	1.38	1.06	.53	1.81	4.50	3.25	3.44
1-1/8	1037229	9.29	7.25	4.56	.63	2.38	1.75	1.31	.66	2.06	5.38	3.88	4.06
1-1/4-1-3/8	1037247	9.81	7.25	4.56	.63	2.63	1.94	1.53	.78	2.31	5.38	3.88	4.13

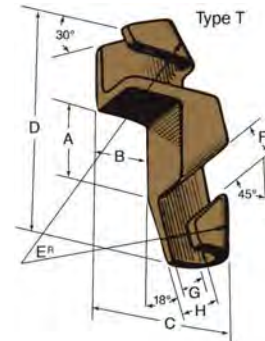
Cast Ductile Iron



Sling Saddle



Bottom Saddle ("B")



Top Saddle ("T")

Newco Sling Saddles (type B and type T) will protect wire rope slings from being cut or severely damaged when rigged around square corner loads, and will aid in protecting the loads themselves. These can be moved or adjusted by hand for various sizes of loads, and are made from a manganese bronze alloy.

Type B - Bottom										
Number	Rope Size	A	B	C	D	E	F	G	X	Weight (lbs)
RSP-5B	3/8	2-1/8	3	7/8	7/16	1-3/16	7/16	1-1/4	90°	1/2
RSP-5.5B	1/2	3-1/16	4-1/2	1-3/16	5/8	1-5/8	5/8	1-7/8	90°	1-1/2
RSP-6B	5/8	3-7/16	5	1-5/16	3/4	1-3/4	3/4	2	90°	1-3/4
RSP-7B	3/4	4-9/32	6-1/4	1-1/2	15/16	2-3/16	15/16	2-5/8	90°	3
RSP-9B	7/8 & 1	5-1/8	7-3/8	1-3/4	1-1/8	2-5/8	1-1/8	3-1/8	90°	5
RSP-10B	1-1/8 & 1-1/4	6-1/8	9	2-1/8	1-3/8	3-1/8	1-5/16	3-3/4	90°	10
RSP-12B	1-3/8 & 1-1/2	6-7/8	10-1/4	2-3/8	1-11/16	3-1/2	1-5/8	4-1/8	90°	11

Type T- Top										
Number	Rope Size	A	B	C	D	E	F	G	H	Weight (lbs)
RSP-5T	3/8	1-5/32	23/32	1-11/16	3-5/8	4-5/8	7/16	7/16	7/8	1/2
RSP-5.5T	1/2	1-7/8	1-3/16	2-9/16	5-5/16	5-3/4	5/8	5/8	1-3/16	1-1/4
RSP-6T	5/8	2	1-3/8	2-15/16	5-7/8	8	3/4	3/4	1-5/16	1-1/2
RSP-7T	3/4	2-1/2	1-23/32	3-19/32	7-1/2	10	15/16	15/16	1-1/2	2-1/2
RSP-9T	7/8 & 1	3	2-3/16	4-7/16	8-3/4	12	1-1/8	1-1/8	1-3/4	4-1/4
RSP-10T	1-1/8 & 1-1/4	3-1/2	2-3/8	5	10-3/8	14	1-3/8	1-5/16	2-1/8	7-1/2
RSP-12T	1-3/8 & 1-1/2	4-1/4	2-13/16	5-15/16	11-7/8	17	1-11/16	1-1/8	2-3/8	9