

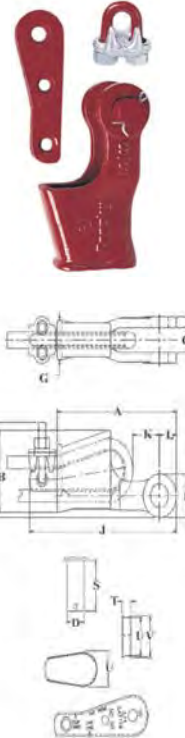


Wire Rope Sockets

Wedge sockets meet the performance requirements of Federal Specification RR-S-550E, Type C, except those provisions required of the contractor.

S-421T Wedge Sockets

- Wedge socket terminations have an efficiency rating of 80% based on the catalog strength of XXIP wire rope.
- Meets or exceeds all requirements of ASME B30.26 including identification, ductility, design factor, proof load and temperature requirements. Importantly, these sockets meet other critical performance requirements including fatigue life, impact properties and material traceability, not addressed by ASME B30.26.
- Type Approval and certification in accordance with ABS 2007 Steel Vessel Rules.1-1-17.7, and ABS Guide for Certification of Cranes.
- Basket is cast steel and individually magnetic particle inspected.
- Pin diameter and jaw opening allows wedge and socket to be used in conjunction with closed swage and spelter sockets.
- Secures the tail or “dead end” of the wire rope to the wedge, thus eliminates loss or “Punch out” of the wedge.
- Eliminates the need for an extra piece of rope, and is easily installed.
- The TERMINATOR™ wedge eliminates the potential breaking off of the tail due to fatigue.
- The tail, which is secured by the base of the clip and wedge, is left undeformed and available for reuse.
- Incorporates Crosby’s patented QUIC-CHECK® “Go” and “No-Go” feature cast into the wedge. The proper size rope is determined when the following criteria are met:
 1. The wire rope should pass thru the “Go” hole in the wedge.
 2. The wire rope should NOT pass thru the “No-Go” hole in the wedge.
- Utilizes standard Crosby Red-U-Bolt® wire rope clip.
- The 3/8” thru 1-1/8” standard S-421 wedge socket can be retrofitted with the new style TERMINATOR™ wedge.
- Available with Bolt, Nut and Cotter Pin.
- U.S. patent 5,553,360, Canada patent 2,217,004 and foreign equivalents.
- Meets the performance requirements of EN 13411-6: 2003.



S-421 Wedge Sockets Assembly includes Socket, Wedge, Pin and Wire Rope Clip

Wire Rope Diameter		S-421T Stock Number	API 2C S-421T Stock Number	Dimensions (in.)															
(in.)	(mm)			A	B	C +/-09	D	G	H	J*	K*	L	P	R	S	T	U	V	
3/8	9-10	1035000	1035005	5.69	2.72	.81	.81	1.38	3.06	7.80	1.88	.88	1.56	.44	2.13	.44	1.25	1.38	
1/2	11-13	1035009	1035014	6.88	3.47	1.00	1.00	1.62	3.76	8.91	1.26	1.06	1.94	.50	2.56	.53	1.75	1.88	
5/8	14-16	1035018	1035023	8.25	4.30	1.25	1.19	2.12	4.47	10.75	1.99	1.22	2.25	.56	3.25	.69	2.00	2.19	
3/4	18-19	1035027	1035032	9.88	5.12	1.50	1.38	2.44	5.28	12.36	2.41	1.40	2.63	.66	3.63	.78	2.34	2.56	
7/8	20-22	1035036	1035041	11.25	5.85	1.75	1.63	2.69	6.16	14.37	2.48	1.67	3.13	.75	4.31	.88	2.69	2.94	
1	24-26	1035045	1035050	12.81	6.32	2.00	2.00	2.94	6.96	16.29	3.04	2.00	3.75	.88	4.70	1.03	2.88	3.28	
1-1/8	28	1035054	1035059	14.38	6.92	2.25	2.25	3.31	7.62	18.34	2.56	2.25	4.25	1.00	5.44	1.10	3.25	3.56	
1-1/4	30-32	1035063	1035068	16.34	8.73	2.62	2.50	3.56	9.39	20.48	2.94	2.34	4.50	1.06	6.13	1.19	4.62	4.94	

* Nominal NOTE: For intermediate wire rope sizes, use next larger size socket. The S-423T Super TERMINATOR™ wedge is designed to be assembled only into the Crosby S-421T TERMINATOR™ socket body. IMPORTANT: The S-423TW for sizes 5/8” through 1-1/8” (14mm through 28mm) will fit respective size standard Crosby S-421T basket. The 1-1/4” (30-32mm) S-423TW will only fit the Crosby S-421T 1-1/4” basket marked with “TERMINATOR™”

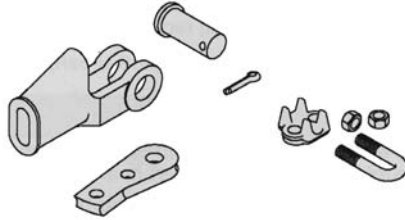
Wire Rope Diameter		S-421T Stock Number	API 2C S-421T Stock Number	Weight Each (lbs)	S-421TW Stock Number Wedge Only	API 2C S-421 TW Stock Number Wedge Only	Wedge Only Weight Each (lbs)	Optional G-4082 Bolt, Nut & Cotter	
(in.)	(mm)							G-4082 Stock Number	Weight Each (lbs)
3/8	9-10	1035000	1035005	3.18	1035555	1092230	.50	1092227	.38
1/2	11-13	1035009	1035014	6.15	1035564	1092248	1.05	1092236	.69
5/8	14-16	1035018	1035023	9.70	1035573	1092257	1.79	1092254	1.15
3/4	18-19	1035027	1035032	14.50	1035582	1092293	2.60	1092281	1.91
7/8	20-22	1035036	1035041	21.50	1035591	1092319	4.00	1092307	3.23
1	24-26	1035045	1035050	30.75	1035600	1092337	5.37	1092325	5.40
1-1/8	28	1035054	1035059	45.30	1035609	1092364	7.30	1092343	7.50
1-1/4	30-32	1035063	1035068	64.90	1035618	1092375	10.60	1092372	10.34



Wedge Sockets

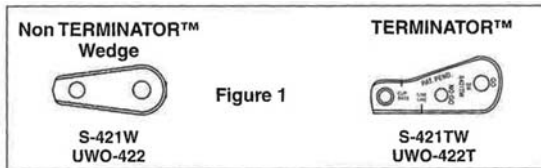
Warnings and Application Instructions

Extended Wedge Socket Assembly U.S. Patent No.5.553.360 and Canada Patent No. 2.217.004.



S-421T / US-422
"TERMINATOR"TM

NOTE: The design of the basket for the S-421T 1-1/4" TERMINATORTM Wedge Socket does not allow proper fit to the old style Crosby S-421W wedge (see Fig. 1). **Do not assemble or use.** The design of the basket for each US-422 TERMINATORTM Wedge Socket does not allow proper fit to the old style UWO-422 wedge (see Fig. 1). **Do not assemble or use.** All S-421T and US-422 TERMINATORTM baskets are marked with a capital "T" or TERMINATORTM.



QUIC-CHECK[®] "GO" and "No-Go" features cast into wedge. The proper size wire rope is determined when the following criteria are met:

1. The wire rope shall pass thru the "Go" hole in the wedge.
2. The wire rope shall NOT pass thru the "No-Go" hole in the wedge.

Important Safety Information - Read and Follow Inspection/Maintenance Safety

- Always inspect socket, wedge and pin before using.
- Do not use part showing cracks.
- Do not use modified or substitute parts.
- Repair minor nicks or gouges to socket or pin by lightly grinding until surfaces are smooth.
- Do not reduce original dimension more than 10%.
- Do not repair by welding.
- Inspect permanent assemblies annually, or more often in severe operating conditions.
- Do not mix and match wedges or pins between models or sizes.
- Always select the proper wedge and socket for the wire rope size.

Assembly Safety

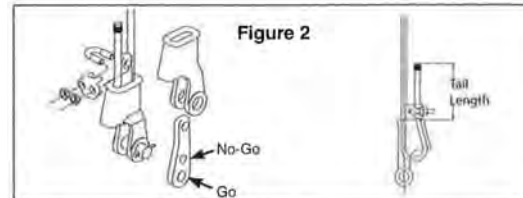
- Use only with standard 6 to 8 strand wire rope of designated size. For intermediate size rope, use next larger size socket. For example: when using 9/16" diameter wire rope use a 5/8" size Wedge Socket Assembly. Welding of the tail on standard wire rope is not recommended. Seizing of the tail is preferred following the recommended practices of the wire rope manufacturer. The tail length of the dead end should be a minimum of 6 rope diameters but not less than 6" (See Figure 2).
- **To use with Rotation Resistant wire rope** (special wire rope constructions with 8 or more outer strands) ensure that the dead end is welded, brazed or seized before inserting the wire rope into the wedge socket to prevent core slippage or loss of rope lay. Seizing of the tail is preferred following the recommended practices of the wire rope manufacturer. The tail length of the dead end should be a minimum of 20 rope diameters but not less than 6" (See Figure 2).
- Properly match socket, wedge and clip (See Table 1) to wire rope size.

- Align live end of rope, with center line of pin. (See Figure 1).
- Secure dead end section of rope. (See Figure 1).
- **DO NOT ATTACH DEAD END TO LIVE END.** (See Figure 1).
- Use a hammer to seat Wedge and Rope as deep into socket as possible before applying first load.

Warning !

- Loads may slip or fall if the Wedge Socket is not properly installed.
- Load misapplied in direct contact with the wedge can dislodge the wedge & cause loss of load.
- A falling load can seriously injure or kill.
- Read and understand these instructions before installing the Wedge Socket.
- Do not side load the Wedge Socket.
- Do not interchange Crosby wedge socket, wedge or pin with non Crosby Wedge socket, wedge or pin.
- Apply first load to fully seat the Wedge and Wire Rope in the socket. This load should be of equal or greater weight than loads expected in use.
- Do not interchange wedge between S-421 and US-422 or between sizes.
- Do not assemble an old style 1-1/4" (30-32mm) S-421W wedge into a S-421T 1-1/4" (30-32mm) TERMINATORTM basket.
- Do not assemble an old style UWO-422 wedge into a US-422T TERMINATORTM basket.

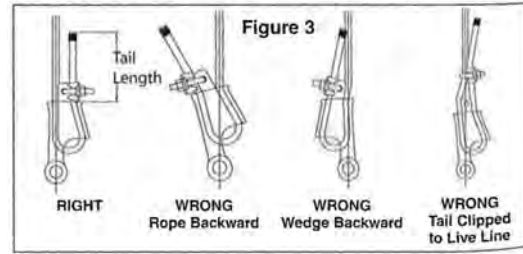
FITTINGS & BLOCKS



*Tail Length	
Standard 6 to 8 Strand Wire Rope	Rotation Resistant Wire Rope
A minimum of 6 rope diameters, but not less than 6"	A minimum of 20 rope diameters, but not less than 6"

TABLE 1								
Rope Size (in.)	3/8	1/2	5/8	3/4	7/8	1	1-1/8	1-1/4
Clip Size (in.)	3/8	1/2	5/8	3/4	7/8	1	1-1/8	1-1/4
* Torque Ft./lbs.	45	65	95	130	225	225	225	360

* The tightening torque values shown are based upon the threads being clean, dry, and free of lubrication.



Operating Safety

- Apply first load to fully seat the Wedge and Wire Rope in the socket. This load should be of equal or greater weight than loads expected in use.
- Efficiency rating of the Wedge Socket termination is based upon the catalog breaking strength of Wire Rope. The efficiency of a properly assembled Wedge Socket is 80%.
- During use, do not strike the dead end section with any other elements of the rigging (Called two blocking).
- Do not allow a direct load to contact the wedge.

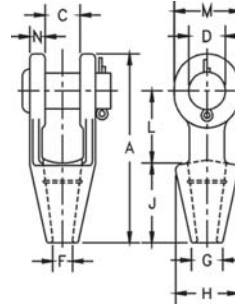


Open Spelter Sockets



G-416/S-416

- Forged Steel Sockets thru 1-1/2", cast alloy steel 1-5/8" thru 4".
- Spelter socket terminations have an efficiency rating of 100%, based on the catalog strength of wire rope. Ratings are based on recommended use with 6x7, 6x19, or 6x37, IPS or XIP (EIP), XXIP (EIP), RRL, FC, or IWRC wire rope.
- Strand constructed with minimal number of wires (e.g., 1 x 7) requires special consideration that socket basket length be five (5) times the strand diameter or fifty (50) times the wire diameter, whichever is the greater.
- Open Grooved Sockets meet the performance requirements of Federal Specification RR-S-550E, Type A, expect for those provisions required of the contractor.



G-416 & S-416 Open Spelter Sockets

Rope Diameter		Structural Strand Diameter (in.)	Ultimate Load (tons)	Stock Number		Weight Each (lbs)	Dimensions (in.)										Tolerance +/-
(in.)	(mm)			G-416 Galv.	S-416 S.C.		A	C	D	F	G	H	J	L	M	N	
1/4	6 - 7	-	4.5	1039619	1039628	1.10	4.56	.75	.69	.38	.69	1.56	2.25	1.56	1.31	.36	.06
5/16-3/8	8 - 10	-	12	1039637	1039646	1.30	4.84	.81	.81	.50	.81	1.69	2.25	1.75	1.50	.44	.06
7/16-1/2	11 - 13	-	20	1039655	1039664	2.25	5.56	1.00	1.00	.56	.94	1.88	2.50	2.00	1.88	.50	.06
9/16-5/8	14 - 16	1/2	27	1039673	1039682	3.60	6.75	1.25	1.19	.69	1.13	2.25	3.00	2.50	2.25	.56	.06
3/4	18	9/16-5/8	43	1039691	1039708	5.83	7.94	1.50	1.38	.81	1.25	2.62	3.50	3.00	2.62	.62	.06
7/8	20 - 22	11/16-3/4	55	1039717	1039726	9.65	9.25	1.75	1.63	.94	1.50	3.25	4.00	3.50	3.13	.80	.06
1	24 - 26	13/16 - 7/8	78	1039735	1039744	15.50	10.56	2.00	2.00	1.13	1.75	3.75	4.50	4.00	3.75	.88	.06
1-1/8	28 - 30	15/16 - 1	92	1039753	1039762	21.50	11.81	2.25	2.25	1.25	2.00	4.12	5.00	4.62	4.12	1.00	.12
1-1/4 to 1-3/8	32 - 35	1-1/16 to 1-1/8	136	1039771	1039780	31.00	13.19	2.50	2.50	1.50	2.25	4.75	5.50	5.00	4.75	1.13	.12
1-1/2	38	1-3/16 to 1-1/4	170	1039799	1039806	47.25	15.12	3.00	2.75	1.63	2.75	5.25	6.00	6.00	5.38	1.19	.12
*1-5/8	* 40 - 42	1-5/16 to 1-3/8	188	1039815	1039824	55.00	16.25	3.00	3.00	1.75	3.00	5.50	6.50	6.50	5.75	1.31	.12
*1-3/4 to 1-7/8	* 44 - 48	1-7/16 to 1-5/8	268	1039833	1039842	82.00	18.25	3.50	3.50	2.00	3.13	6.38	7.50	7.00	6.50	1.56	.12
*2 to 2-1/8	* 50 - 54	1-11/16 to 1-3/4	291	1039851	1039860	129.00	21.50	4.00	3.75	2.25	3.75	7.38	8.50	9.00	7.00	1.81	.12
*2-1/4 to 2-3/8	* 56 - 60	1-13/16 to 1-7/8	360	1039879	1039888	167.00	23.50	4.50	4.25	2.50	4.00	8.25	9.00	10.00	7.75	2.13	.12
*2-1/2 to 2-5/8	* 64 - 67	1-15/16 to 2-1/8	424	1041633	1041642	252.00	25.50	5.00	4.75	2.88	4.50	9.25	9.75	10.75	8.50	2.38	.12
*2-3/4 to 2-7/8	* 70 - 73	2-3/16 to 2-7/16	511	1041651	1041660	315.00	27.25	5.25	5.00	3.12	4.88	10.50	11.00	11.00	9.00	2.88	.25
*3 to 3-1/8	* 75 - 80	2-1/2 to 2-5/8	563	1041679	1041688	380.00	29.00	5.75	5.25	3.38	5.25	11.12	12.00	11.25	9.50	3.00	.25
*3-1/4 to 3-3/8	* 82 - 86	2-3/4 to 2-7/8	722	1041697	1041704	434.00	30.88	6.25	5.50	3.62	5.75	11.88	13.00	11.75	10.00	3.12	.25
*3-1/2 to 3-5/8	* 88 - 92	3 to 3-1/8	779	1041713	1041722	563.00	33.25	6.75	6.00	3.88	6.50	12.38	14.00	12.50	10.75	3.25	.25
*3-3/4 to 4	* 94 - 102	-	875	1041731	1041740	783.00	36.25	7.50	7.00	4.25	7.25	13.62	15.00	13.50	12.50	3.50	.25

* Cast Alloy Steel Note: Available with bolt nut and cutter for more information.

Note

All cast steel sockets 1-5/8" and larger are magnetic particle inspected and ultrasonic inspected.

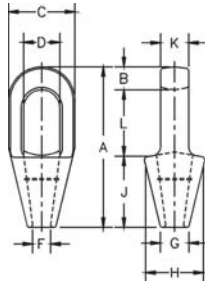
Proof testing available on special order.

Drawing illustrates one groove used on sockets 1/4" through 3/4".

Sizes 7/8" through 1-1/2" use 2 grooves. Sizes 1-5/8" and larger use 3 grooves.



Closed Spelter Socket



- Forged Steel Sockets thru 1-1/2", cast alloy steel 1-5/8" thru 4".
- Spelter socket terminations have an efficiency rating of 100%, based on the catalog strength of wire rope. Ratings are based on the recommended use with 6x7, 6x19 or 6x37, IPS (EIP), XXIP (EEIP), RRL, FC or IWRC wire rope. Strand constructed with minimal number of wires (e.g., 1 x 7) requires special consideration that socket basket length be five (5) times the strand diameter or fifty (50) times the wire diameter, whichever is the greater.



G-417/S-417

Closed grooved Sockets meet the performance requirements of Federal Specification RR-S-550E, Type B, except for those provisions required of the contractor.

G-417 & S-417 Closed Spelter Sockets

Rope Diameter		Structural Strand Diameter (in.)	Ultimate Load (t)	Stock Number		Weight Each (lbs)	Dimensions (in.)									
(in.)	(mm)			G-417 Galv.	S-417 S.C.		A	B	C	D*	F	G	H	J	K	L
1/4	6 - 7	-	4.50	1039897	1039904	.50	4.50	.50	1.50	.88	.38	.69	1.56	2.25	.50	1.75
5/16-3/8	8 - 10	-	12.0	1039913	1039922	.75	4.94	.62	1.69	.97	.50	.81	1.69	2.25	.69	2.06
7/16-1/2	11 - 13	-	20.0	1039931	1039940	1.50	5.50	.69	2.00	1.16	.56	.94	2.00	2.50	.88	2.31
9/16-5/8	14 - 16	1/2	30.8	1039959	1039968	2.50	6.31	.81	2.63	1.41	.69	1.12	2.38	3.00	1.00	2.50
3/4	18	9/16-5/8	43.5	1039977	1039986	4.25	7.62	1.06	3.00	1.66	.88	1.25	2.75	3.50	1.25	3.06
7/8	20 - 22	11/16-3/4	65.3	1039995	1040000	7.25	8.75	1.25	3.63	1.94	1.00	1.50	3.25	4.00	1.50	3.50
1	24 - 26	13/16 - 7/8	81.6	1040019	1040028	10.50	9.88	1.38	4.13	2.30	1.13	1.75	3.75	4.50	1.75	4.00
1-1/8	28 - 30	15/16 - 1	100	1040037	1040046	14.25	11.00	1.50	4.50	2.56	1.25	2.00	4.13	5.00	2.00	4.50
1-1/4 to 1-3/8	32 - 35	1-1/16 to 1-1/8	136	1040055	1040064	19.75	12.12	1.63	5.00	2.81	1.50	2.25	4.75	5.50	2.25	5.00
1-1/2	38	1-3/16 to 1-1/4	170	1040073	1040082	29.20	13.94	1.94	5.38	3.19	1.63	2.75	5.25	6.00	2.50	6.00
1-5/8	* 40 - 42	1-5/16 to 1-3/8	188	1040091	1040108	36.00	15.13	2.13	5.75	3.25	1.75	3.00	5.50	6.50	2.75	6.50
*1 -3/4 to 1-7/8	* 44 - 48	1-7/16 to 1-5/8	268	1040117	1040126	57.25	17.25	2.19	6.75	3.75	2.00	3.13	6.38	7.50	3.00	7.56
*2 to 2-1/8	* 50 - 54	1-11/16 to 1-3/4	309	1040135	1040144	79.00	19.87	2.44	7.63	4.38	2.25	3.75	7.38	8.50	3.25	8.81
*2-1/4 to 2-3/8	* 56 - 60	1-13/16 to 1-7/8	360	1040153	1040162	105.00	21.50	2.75	8.50	5.00	2.63	4.13	8.25	9.00	3.63	9.75
*2-1/2 to 2-5/8	* 64 - 67	1-15/16 to 2-1/8	424	1041759	1041768	140.00	23.50	3.12	9.50	5.50	2.88	4.50	9.25	9.75	4.00	10.62
*2-3/4 to 2-7/8	* 70 - 73	2-3/16 to 2-7/16	549	1041777	1041786	220.00	25.38	3.12	10.75	6.25	3.12	4.88	10.19	11.00	4.88	11.25
*3 to 3-1/8	* 75 - 80	2-1/2 to 2-5/8	656	1041795	1041802	276.00	27.12	3.37	11.50	6.75	3.38	5.25	11.50	12.00	5.25	11.75
*3-1/4 to 3-3/8	* 82 - 86	2-3/4 to 2-7/8	750	1041811	1041820	313.00	29.25	4.00	12.25	7.25	3.62	5.75	12.25	13.00	5.75	12.25
*3-1/2 to 3-5/8	* 88 - 92	3 to 3-1/8	820	1041839	1041848	400.00	31.00	4.00	13.00	7.75	3.88	6.31	13.00	14.00	6.25	13.00
*3-3/4 to 4	* 94 - 102	-	1005	1041857	1041866	542.00	33.25	4.25	14.25	8.50	4.25	7.25	14.25	15.00	7.00	14.00

* Cast Alloy Steel
Diameter of pin must not exceed pin used on companion 416 socket. Reference column "D" dimension.

FITTINGS & BLOCKS

Note

All cast steel sockets 1-5/8" and larger are magnetic particle inspected and ultrasonic inspected.
 Proof testing available on special order.
 Drawing illustrates one groove used on sockets 1/4" through 3/4".
 Sizes 7/8" through 1-1/2" use 2 grooves. Sizes 1-5/8" and larger use 3 grooves.

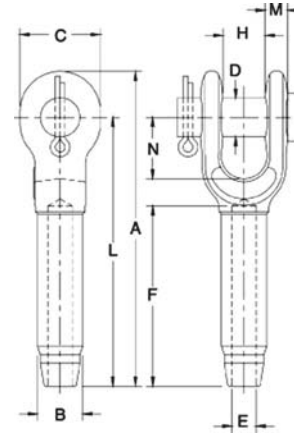


Open Swage Socket



S-501

- Forged from special bar quality carbon steel, suitable for cold forming.
- Hardness controlled by spheroidize annealing.
- Swage Socket terminations have an efficiency rating of 100% based on the catalog strength of wire rope.
- Swage Sockets incorporate a reduced machined area of the shank which is equivalent to the proper "After Swage" dimension. Before swaging, this provides for an obvious visual difference in the shank diameter. After swaging, a uniform shank diameter is created allowing for a QUIC-CHECK[®] and permanent visual inspection opportunity.
- Stamp for identification after swaging without concern for fractures (as per directions in Wire Rope End Terminations User's Manual).
- Designed to quickly determine whether the socket has been through the swaging operation and assist in field inspections, it does not eliminate the need to perform standard production inspection which include gauging for the proper "After Swage" dimensions or proof loading.



S-501 Open Swage Sockets

S-501 Stock Number	S-501B** Stock Number	Rope Size		Weight Each (lbs)	Ultimate Load* (tons)	Before Swage Dimensions (in.)										Tolerance +/-	Max. After Swage Dim. (in.)	Die Description
		(in.)	(mm)			A	B	C	D	E	F	H	L	M	N			
1039021	1054001	1/4	6	.52	5.4	4.78	.50	1.38	.69	.27	2.19	.69	4.00	.38	1.47	.06	.46	1/4 Socket
1039049	1054010	5/16	8	1.12	11.8	6.30	.78	1.62	.81	.34	3.25	.80	5.34	.48	1.67	.06	.71	5/16-3/8 Socket
1039067	1054029	3/8	9-10	1.30	13.6	6.30	.78	1.62	.81	.41	3.25	.80	5.34	.48	1.67	.06	.71	5/16-3/8 Socket
1039085	1054038	7/16	11-12	2.08	18.1	7.82	1.01	2.00	1.00	.49	4.31	1.00	6.69	.56	1.96	.06	.91	7/16-1/2 Socket
1039101	1054047	1/2	13	2.08	21.3	7.82	1.01	2.00	1.00	.55	4.31	1.00	6.69	.56	1.96	.06	.91	7/16-1/2 Socket
1039129	1054056	9/16	14	4.67	31.8	9.54	1.27	2.38	1.19	.61	5.38	1.25	8.13	.68	2.21	.06	1.16	9/16-5/8 Socket
1039147	1054065	5/8	16	4.51	34.9	9.54	1.27	2.38	1.19	.68	5.38	1.25	8.13	.68	2.21	.06	1.16	9/16-5/8 Socket
1039165	1054074	3/4	18-20	7.97	43.5	11.61	1.56	2.75	1.38	.80	6.44	1.50	10.00	.80	2.69	.06	1.42	3/4 Socket
1039183	1054083	7/8	22	11.52	51.5	13.37	1.72	3.13	1.63	.94	7.50	1.75	11.63	.94	3.20	.07	1.55	7/8 Socket
1039209	1054092	1	24-26	17.80	71.4	15.47	2.00	3.69	2.00	1.07	8.63	2.00	13.38	1.07	3.68	.08	1.80	1 Socket
1039227	1054104	1-1/8	28	25.25	83.3	17.35	2.25	4.12	2.25	1.19	9.63	2.25	15.00	1.19	4.18	.10	2.05	1-1/8 Socket
1039245	1054113	1-1/4	32	35.56	109	19.20	2.53	4.59	2.50	1.34	10.69	2.50	16.50	1.27	4.68	.10	2.30	1-1/4 Socket
1039263	1054122	1-3/8	34-36	43.75	136	21.10	2.81	5.25	2.50	1.46	11.88	2.41	18.13	1.46	5.25	.10	2.56	1-3/8 Socket
1039281	1054131	1-1/2	38-40	58.50	181	23.17	3.08	5.50	2.75	1.59	12.81	3.00	19.75	1.70	5.70	.10	2.81	1-1/2 Socket
1039307	1054140	1-3/4	44	88.75	228	26.70	3.40	6.25	3.50	1.87	15.06	3.50	23.00	2.11	6.67	.10	3.06	1-3/4 Socket
1042767	1054159	2	48-52	146.2	272	31.15	3.94	7.80	3.75	2.12	17.06	4.00	26.75	1.81	8.19	.10	3.56	2 Socket

* The Ultimate Loads of 3/4" through 1 1/4" sizes have been increased to meet the requirements for 8 strand 2160 Grade pendants.
 ** Assembly with bolt, nut and cotter pin.

Note

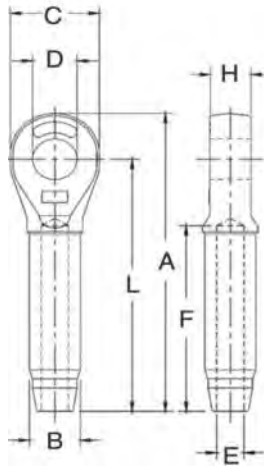
S-501 Swage Sockets are recommended for use with 6 x 19 or 6 x 37, IPS or XIP (EIP), XXIP (EEIP), RRL, FC or IWRC wire rope.

Before using any National Swage fitting with any other type lay, construction or grade of wire rope, it is recommended that the termination be destructive tested and documented to prove the adequacy of the assembly to be manufactured.

In accordance with ASME B30.9, all slings terminated with swage sockets shall be proof loaded.*



Closed Swage Socket



- Forged from special bar quality carbon steel, suitable for cold forming.
- Swage Socket terminations have an efficiency rating of 100% based on the catalog strength of wire rope.
- Hardness controlled by spheroidize annealing.
- Stamp for identification after swaging without concern for fractures (as per directions in the Wire Rope End Terminations User's Manual).
- Swage sockets incorporate a reduced machined area of the shank which is equivalent to the proper "After Swage" dimension. Before swaging, this provides for an obvious visual difference in the shank diameter. After swaging, a uniform shank diameter is created allowing for a QUIC-CHECK® and permanent visual inspection opportunity.
- Designed to quickly determine whether the socket has been through the swaging operation and assist in field inspections, it does not eliminate the need to perform standard production inspections which include gauging for the proper "After Swage" dimensions or proof loading.



S-502

S-502 Closed Swage Sockets

S-502 Stock Number	Rope Size		Weight Each (lbs)	Ultimate Load ** (t)	Before Swage Dimensions (in.)								Max. After Swage Dim. (in.)	Die Description
	(in.)	(mm)			A	B	C	D	E	F	H	L		
1039325	1/4	6	.33	5.4	4.28	.50	1.38	.76	.27	2.19	.50	3.50	.46	1/4 Socket
1039343	5/16	8	.75	11.8	5.42	.77	1.62	.88	.34	3.25	.68	4.50	.71	5/16-3/8 Socket
1039361	3/8	9-10	.72	13.6	5.42	.78	1.62	.88	.41	3.25	.68	4.50	.71	5/16-3/8 Socket
1039389	7/16	11-12	1.42	18.1	6.88	1.01	2.00	1.07	.49	4.31	.87	5.75	.91	7/17-1/2 Socket
1039405	1/2	13	1.42	21.3	6.88	1.01	2.00	1.07	.55	4.31	.87	5.75	.91	7/16-1/2 Socket
1039423	9/16	14	2.92	31.8	8.59	1.27	2.38	1.28	.61	5.38	1.14	7.25	1.16	9/16-5/8 Socket
1039441	5/8	16	2.85	34.9	8.59	1.27	2.38	1.28	.68	5.38	1.14	7.25	1.16	9/16-5/8 Socket
1039469	3/4	18-20	5.00	43.5	10.25	1.56	2.88	1.49	.80	6.44	1.33	8.63	1.42	3/4 Socket
1039487	7/8	22	6.80	51.5	11.87	1.72	3.12	1.73	.94	7.50	1.53	10.09	1.55	7/8 Socket
1039502	1	24-26	10.40	71.4	13.56	2.00	3.62	2.11	1.07	8.63	1.78	11.50	1.80	1 Socket
1039520	1-1/8	28	14.82	83.3	15.03	2.25	4.00	2.37	1.19	9.75	2.03	12.75	2.05	1-1/8 Socket
1039548	1-1/4	32	21.57	109	16.94	2.53	4.50	2.62	1.34	10.81	2.25	14.38	2.30	1-1/4 Socket
1039566	1-3/8	34-36	28.54	136	18.59	2.81	5.00	2.62	1.46	11.88	2.29	15.75	2.56	1-3/8 Socket
1039584	1-1/2	38-40	38.06	181	20.13	3.08	5.38	2.87	1.59	12.81	2.56	17.00	2.81	1-1/2 Socket
1039600	1-3/4	44	51.00	228	23.56	3.40	6.25	3.63	1.87	15.06	3.08	20.00	3.06	1-3/4 Socket
1042589	2	48-52	89.25	272	27.13	3.94	7.25	3.88	2.12	17.06	3.31	23.00	3.56	2 Socket

* Maximum Proof Load shall not exceed 50% of XXIP rope catalog breaking strength.
 ** The Ultimate Loads of 3/4" through 1 1/4" sizes have been increased to meet the requirements for 8 strand 2160 Grade pendants.

FITTINGS & BLOCKS

Note

S-502 Swage Sockets are recommended for use with 6 x 19 or 6 x 37, IPS or XIP (EIP), XXIP (EEIP), RRL, FC or IWRC wire rope.

Before using any National Swage fitting with any other type lay, construction or grade of wire rope, it is recommended that the termination be destructive tested and documented to prove the adequacy of the assembly to be manufactured.

In accordance with ASME B30.9, all slings terminated with swage sockets shall be proof loaded.*