



Sheet Lifters

Model 60 Sheet Lifter

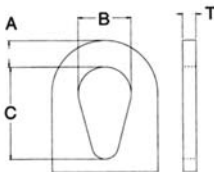
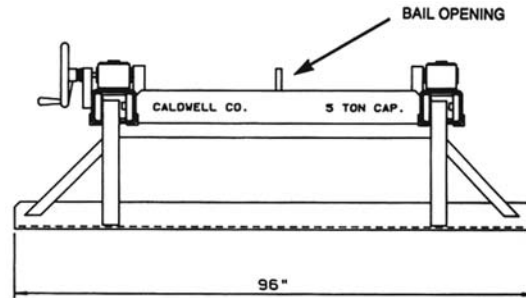
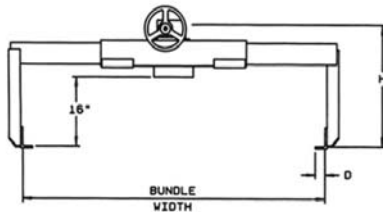
PRODUCT FEATURES:

- Versatile handling of bundled, sheets, plates and other materials stacked horizontally.
- Low headroom design for optimum lifting capabilities.
- One person operation minimizes handling cost. Self-locking worm-gear for leg adjustment drive is standard.
- Easy adjustment for different sheet widths. Rack and pinion leg drive.
- Designed for ease of maintenance.
- Designed for greater sheet width range. Complies with ASME Standards.



PRODUCT OPTIONS:

- Hand Wheel lockout. Motorized leg adjustment.
- Chain-wheel leg adjustment.
- Extended length hand wheel leg adjustment.
- End chains with plate hooks (recommended for all widths 72" and greater).
- Extended grabshoe lengths available.
- Additional bundle clearance available (longer legs).



Catalog Number	Capacity (tons)	Dimensions (in.)									Weight (lbs)
		Bundle Width		Headroom H	Shoe D.	Min. Aisle	Bail Opening				
		Min.	Max.				A	B	C	T	
60-3-48	3	16	48	28	2.63	9	1-1/2	3	5	3/4	920
60-3-60		16	60	28	2.63	9	1-1/2	3	5	3/4	950
60-3-72		16	72	28	2.63	9	1-1/2	3	5	3/4	980
60-5-48	5	16	48	29	2.63	9	2	4	6	1	1125
60-5-60		16	60	29	2.63	9	2	4	6	1	1170
60-5-72		16	72	29	2.63	9	2	4	6	1	1220
60-5-84		16	84	29	2.63	9	2	4	6	1	1270
60-5-96		16	96	29	2.63	9	2	4	6	1	1550
60-10-48	10	16	48	30	3.5	11	2	4	7	1-1/2	1510
60-10-60		16	60	30	3.5	11	2	4	7	1-1/2	1570
60-10-72		16	72	30	3.5	11	2	4	7	1-1/2	1640
60-10-84		16	84	30	3.5	11	2	4	7	1-1/2	1700
60-10-96		16	96	30	3.5	11	2	4	7	1-1/2	1770
60-15-48	15	16	48	32	3.5	12	2-1/2	5	9	1-1/2	1570
60-15-60		16	60	32	3.5	12	2-1/2	5	9	1-1/2	1640
60-15-72		16	72	32	3.5	12	2-1/2	5	9	1-1/2	1700
60-15-84		38	84	32	3.5	12	2-1-5	5	9	1-1/2	1960
60-15-96		38	96	32	3.5	12	2-1/2	5	9	1-1/2	2030



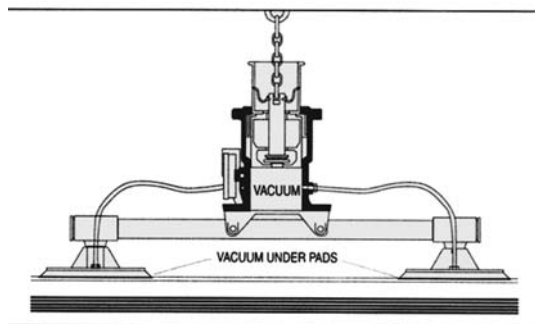
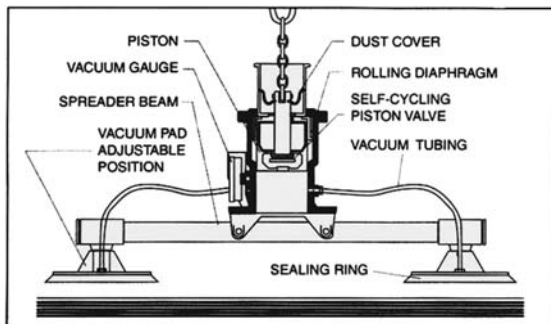
Anver Vacuum Lifter

Anver Mechanical Vacuum Lifters increase productivity -- increase speed and efficiency of handling -- increase safety to men and machinery -- decrease unnecessary labor and product damage. -- Consult us for your next requirement -- Anver Lifters are profit makers!



UNIQUE ADVANTAGES

- Simple one person operation
- Hoist controls entire operation
- No control buttons on lifter
- No power or set-up required
- No electrical cables or air lines
- Use it with any hoist or fork lift
- Not affected by power failures
- No marking or scratching of surface
- No damage to edges or corners
- Non-magnetizing - fast payback
- Lowest maintenance
- Handles non-magnetic metals
- Silent and clean operation
- Unique optional safety system



The **Anver Mechanical Vacuum Lifter** is a unique product which can speed up horizontal handling of sheet and plate, fabrications and all types of nonporous materials.

One man simply attaches the hook of a crane, hoist or boom truck to the Anver Lifter, positions the unit on the load, and alone, controls the entire handling operation.

Anver Vacuum Lifters do not rely upon the power, outside controls or complex accessories - they are self-contained units that create their own vacuum grip mechanically, without power source. This gives them unmatched mobility for use in metal fabricating plants, service centers, warehouses and plate yards, on ferrous and non-ferrous metals - indoors and out - WHEREVER materials need to be loaded, unloaded, stored and stacked, handled or transferred.

BELOW THE
HOOK