



Related Elevator Products

Tiller Rope

Tiller Rope is one of the most flexible wire ropes made. However, because of its fine wires, it should be used only where loads are light and abrasion and crushing are at a minimum.

The 6x42 construction is comprised of 6 strands of 6x7 fiber core around a fiber core center. Manufactured in both Phosphor Bronze or Galvanized Steel, this rope is used as a hand rope in connection with the operating device of passenger and freight elevators, as steering cable on small boats and steamers, and for industrial and mining signaling devices.

Tiller Rope should NOT be used as a hoisting rope where breakage will endanger life or property.



6x42 Tiller Rope

Diameter (in.) (mm)	Phosphor Bronze			Galvanized Steel		
	P/N	Min. Break Str.	Wt. M/ft	P/N	Min. Break Str.	Wt. M/ft
3/8" (9.5 mm)	1264283111	2,960	180 lb	1264263111	2,600	160 lb
7/16" (11 mm)	1464283111	4,020	240 lb	1464263111	3,540	210 lb
1/2" (12.7 mm)	1664283111	5,190	305 lb	1664263111	4,600	280 lb

Galvanized Aircord

Small diameter galvanized wire rope, sometimes called Galvanized Aircord, is used in many applications including small winch lines, overhead doors, yacht rigging, and, even clothes line.

Selector Cable is a special application of 1/8" 7x19 Galvanized Aircord that has been specially lubricated and conforms to the MIL-DTL-83420 military specification.

7x19 Galvanized Aircord

Diameter (in.)	Nominal Strength (lbs)	Approx. Wt. lb/100 ft
1/8"	2,000	2.90
5/32"	2,800	4.50
3/16"	4,200	6.50
7/32"	5,600	8.60
1/4"	7,000	11.0
5/16"	9,800	17.3
3/8"	14,400	24.3
Other diameters and constructions available.		

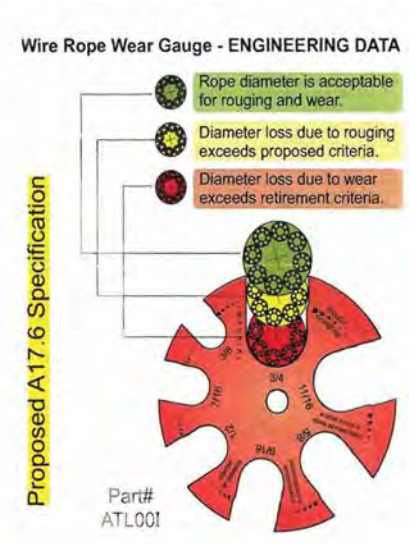


Wire Rope Go-NoGo Gauge



The Go-NoGo Gauge is designed for quick checks and is not meant to replace accurate diameter measuring techniques. To use the Go-NoGo Gauge, slip the elevator rope into the corresponding diameter groove. If the rope slides in, the diameter has reduced and the rope should be retired under the criteria established by ASME specifications for diameter reduction. Before final condemnation, use a caliper or other accurate diameter measuring tool to confirm the measurement.

- Manufactured with anodized aluminum for lightweight, durable construction
- More accurate than plastic models - diameter grooves will not wear as readily, nor will the grooves accommodate a rope whose diameter is still within acceptable limits under A17.6 specifications
- Nominal diameter provided on one side, ASME diameter reduction criteria for rope retirement on the other side
- ATL00I is Red in color and has 7 slots designed to gauge wire ropes from 3/8" to 3/4" in 1/16" increments
- ATL00KM is Blue in color and has 8 slots designed to gauge wire rope of 6 mm, 8 mm, 9.5 mm, 10 mm, 11 mm, 13 mm, 16 mm, and 19 mm diameters





Preformed Reeving Splices



PLP Reeving Splices were designed in conjunction with the Otis Elevator Company as an aid to simplify marrying wire ropes during elevator repairs. Reeving splices hold galvanized steel cables in place, allowing old elevator ropes to be removed and replaced.

The reeving splice is an economical disposable tool that saves repair time by allowing easy passage of the married ropes over pulleys or sheaves. Applied quickly without special tools, Reeving Splices are designed to maintain a constant, positive grip, even when rope go slack.

- Designed to hold working loads from zero to 2,000 lbs
- For use on Galvanized Steel Elevator wire rope
- Patented



Reeving Splice Specifications

PIN #	Wire Rope Size (in.)	Units per Carton	Wt. per Carton (lbs)	Length (in.)	Color Code	Overall Diameter of Spliced Rope
RS-2103	3/8	50	30	22	Yellow	0.477
RS-2105	1/2	10	8	29	Black	0.64"
RS-2106	9/16	10	9	32	Yellow	0.702
RS-2107	5/8	10	13	36	Black	0.797"
RS-2108	11/16	10	17	40	Red	0.887"
RS-2109	3/4	10	18	42	Green	0.95"
RS-2110	13/16	10	24	46	Yellow	1.036"
RS-2111	7/8	10	28	50	Blue	1.113"
RS-2112	1	10	41	56	Orange	1.238



Roebbling Clamp

The Roebbling Clamp utilizes spiral ridges on one side of the groove to resist slippage. Properly applied, the clamp will allow two parallel ropes to share the load during shortening or tensioning applications. The clamps are designed for either 1/2" or 5/8" diameter ropes. When the included bolts are torqued to 50 ft-lbs the clamp maintains a maximum safe working load of 600 lb per rope.

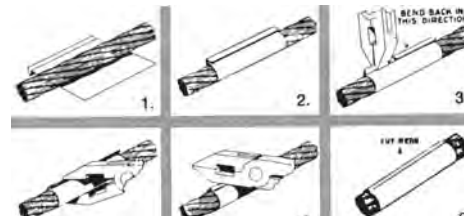


ELEVATOR
PRODUCTS

Cable Bands

Cable Bands are made of pliable material indented with a groove and lock seam at one edge. Application of the band is simple, requires no special tools, and may be made in seconds with an ordinary pair of pliers.

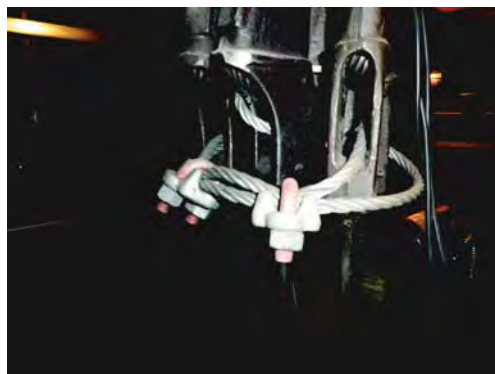
Cable Bands are packaged 50 per box and are designed to fit a particular diameter of rope from 3/16" to 1-1/2".



Shackle Tie Kits

Shackle Tie Kits are used to minimize the rotation of elevator rope wedge sockets under load. Once equal tension has been established, the shackles need to be secured to prevent rotation during the operation of the elevator. A short length of wire rope is laced through the shackles and the ends are joined using wire rope clips. (Local elevator codes vary as to the diameter of the wire rope required.)

The Shackle Tie Kit contains a short length of wire rope and two (2) wire rope clips.

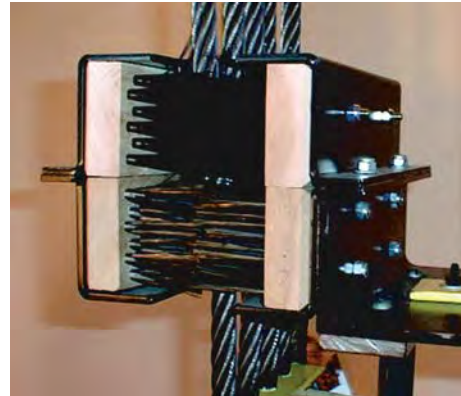




Wire Rope Cleaner

The WRC-2000 Wire Rope Cleaner eliminates the need to clean elevator hoist ropes manually thus saving labor costs and down-time of the elevator. This assembly is designed to clean the elevator hoist ropes passively as the wire rope is used in the elevator's everyday operation.

The WRC-2000 maintains the cleanliness of the wire rope without involving any moving mechanism, thereby increasing the durability and longevity of the wire rope.



Wire Rope Lubricator

The WRC-2000-LP Wire Rope Lubricator reduces the friction between the elevator ropes and machine drive sheaves, minimizes corrosion due to atmospheric and/or operating conditions, and reduces bending fatigue by allowing movement between the wires and strands.

Together with the WRC-2000 Wire Rope Cleaner, this is the ultimate in elevator rope maintenance.

Babbitt

Our superior lead alloy Babbitt is used for shackling of elevator wire ropes. The combination of lead, tin, and antimony (approx. 88/12/5 ratio) has a melting point of 475 degrees Fahrenheit.

The Babbitt pours (casts) between 725 degrees and 775 degrees Fahrenheit. At ambient temperatures the Babbitt forms an effective cone to secure the wires within the Babbitt socket cavity.

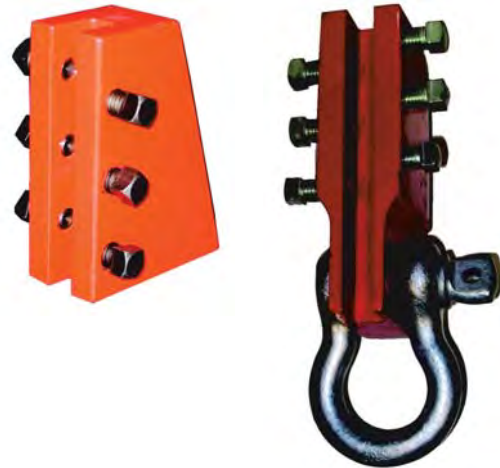




Rail Blocks

Rail Block (left) and Rail Block with Clevis (right) are used to hang the elevator car or counter weight at any position in the hoistway. The maximum, safe working load limit is 25,000 lb per pair of Rail Blocks when the bolts have been properly installed to 70 ft-lbs of torque. Rail blocks are available for three rail sizes (5/8" rail, 3/4" rail, & 1-1/8" / 1-1/4" rail).

Rail Blocks MUST be used in pairs.



ELEVATOR
PRODUCTS

Seizing Wire

Seizing Wire (sometimes called "Mousing Wire") has a variety of uses where light-duty or temporary securement is required. The 21 gauge (0.0286" dia.) dark annealed steel wire is handy for whipping, bailing, binding, mousing, seizing, and other fastening applications.

These 1/2 lb spools contain approximately 186.5 ft of wire.



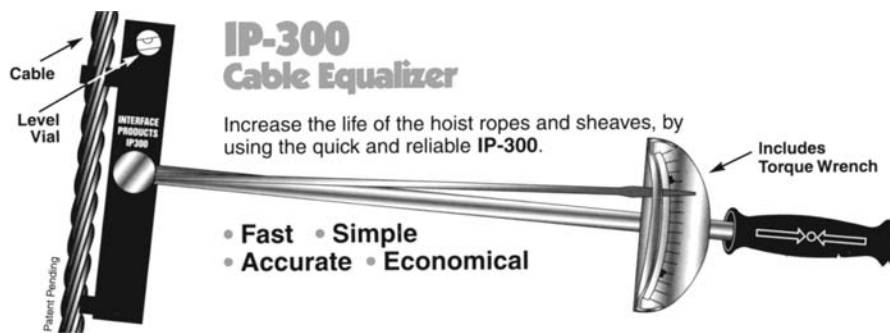
Wide-Jaw Wire Rope Caliper

- Stainless Steel Digital Caliper with 30 mm x 40 mm faces specifically designed to accurately determine wire rope diameters
- Measuring range is 0 - 150 mm (up to 6 inches)
- Accuracy is to within +/- 0.03 mm (+/- 0.0012")
- Zero setting at any position
- Convenient switch to change from inches to millimeters
- Uses SR 44 Watch Battery (included)



Tensionometer

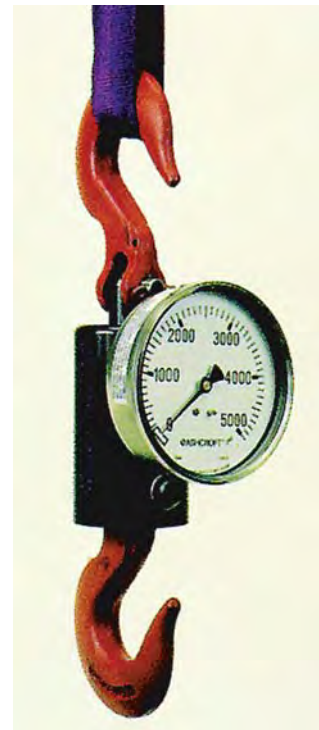
- Measures the relative tension in ropes
- Allows adjustment to equal tension
- Eliminates unequal sheave groove wear, slippage and vibration
- Lengthens service life



Dynamometer

- Used to measure governor pull-through tension or empty car weight
- Accuracy at an affordable price (within 2%)
- Choice of 2,000 lb or 5,000 lb gauge
- Solid all-metal construction
- Made in the U.S.A.

Model Number	Range
LM2-0900	0 - 900 kg
LM2-2000	0 - 2000 lb
LM2-2200	0 - 2200 kg
LM2-5000	0 - 5000 lb





Tractel Minifor®

The Tractel Minifor® Portable Electric Hoist has -

- Unlimited lift heights
- A complete range of electric hoist for a wide range of applications
- Rated loads of 220 lb, 660 lb and 1,000 lb which can be doubled by a sheave kit
- Unloaded wire rope freely suspended or optional rope reeler
- Pendant control
- Direct lift or sheaving kit for increased capacity
- Single-phase or three-phase power
- TR 10 & TR 30 come with blue steel box - TR 30S & TR 50 come in cardboard box

Quality & Power

- High power to weight ratio
- Aluminum alloy body
- Unlimited length of lifting wire rope
- Wire rope diameter 0.25 in (6.5 mm)
- 110V standard, 220V available

Safety

- Upper and lower adjustable end limit stops
- Motor integrated brake



ELEVATOR PRODUCTS



Minifor® fitted with wire rope reeler (optional)



TR10 - TR30 Kit



TR10 - TR30 fitted with sheave block kit (optional)

Tractel Minifor®

Model Number	Dimensions	Weight	Work Load Limit		Speed		Power Supply			Optional WR Reeler	
	L x W x D	w/o Rope	(lbs) (kg)		fpm (mpm)		Single Phase	Single Phase	Three Phase		
	(in.)	(lbs) (kg)	Direct	Sheaved	Direct	Sheaved	115V	220V	220V	66 ft (20 m)	100 ft (35 m)
TR10	14 x 9 x 17	46 (20)	220 (100)	441 (200)	50 (15)	25 (7.5)	X	X		X	X
TR30	14 x 9 x 17	46 (20)	660 (300)	1,320 (600)	17 (5)	8.5 (2.5)	X	X		X	X
TR30S	19 x 9 x 17	71 (32)	660 (300)	1,320 (600)	43 (13)	21 (6.5)	X	X	X		
TR50	19 x 9 x 17	71 (32)	1,000 (453)	2,000 (906)	23 (7)	11.5 (3.5)	X	X	X		



Manual Cable Cutter

The TS-20 Handheld Hydraulic Cable Cutter is portable, lightweight, and designed to perform for years in the toughest field conditions. This cutter can be used in many applications. However, do not use for telephone & lead sheathed cable, chain, or EHS grade Guy Wire.



TS-20 Handheld Hydraulic Cutter

Output	Weight	Length	Jaw Opp.	Wire Rope	Soft Stl Bolts	Rebar, Ground & Anchor Rod	ACSR	Cu & Al Wire	Std. Guy Wire
4.4 tons	5.75 lb	14"	.75"	3/4" (20 mm)	11/16" (17 mm)	1/2" (13 mm)	3/4" (20 mm)	3/4" (20 mm)	1/2" (14 mm)

Impact Cable Cutter

Actuated by striking with a hammer, these portable Impact Cable Cutters are simple to operate and do a superior cutting job with just a few blows. They are precision engineered to deliver a cut without affecting the original roundness of the rope. The blades and dies are made of heat-treated tool steel ground to close tolerances. A firm base is required for operation of the cutter.

ALWAYS WEAR SAFETY GOGGLES AND FOLLOW ALL SAFETY INSTRUCTIONS WHEN OPERATING THE IMPACT CABLE CUTTER.

Model	Capacity	Height	Base	Weight
1	5/8"	6"	3-1/2"	7 lb
1A	1-1/16"	7"	6-1/4"	15 lb
2	1-1/2"	9"	7-3/4"	28 lb



Hydraulic Cable Cutter

The Pell Hydrashear Hydraulic Cable Cutter is a self-contained hydraulic cable cutter designed to give a clean cut with minimum effort. Just pump the handle... no outside power required.

The blades and dies are made of heat-treated tool steel ground to close tolerances. This means a long life for the blades and provides superior performance.

Hydraulic cutters are available in three sizes and capacities:

- Model W-075 has a 3/4" capacity
- Model P-1125 has a 1-1/8" capacity
- Model C-1750 has a 1-3/4" capacity





Klein Parallel-Jaw Grip

The 1671-10 Parallel-Jaw Grip has:

- Longer jaws to achieve a firm hold, reducing the possibility of slippage and damage to the cable
- A design which includes a latch, plus a large diameter eye to accommodate large hooks on hoists, winches, and tackle blocks
- A latch, when closed, that helps maintain cable position in the grip jaws



1671-10



P/N	Min. Diameter	Max. Diameter	Max. Safe Load	Jaw Type	Jaw Length	Approx. Weight
1686-10	0.20" (5.08 mm)	0.40" (10.16 mm)	10,000 lb (4545 kg)	Smooth	4-3/8" (111 mm)	5 lb (2.27 kg)
1686-20	0.20" (5.08 mm)	0.40" (10.16 mm)	10,000 lb (4545 kg)	Knurled	4-3/8" (111 mm)	5 lb (2.27 kg)
1671-10	0.37" (9.40 mm)	0.75" (19.05 mm)	10,000 lb (4545 kg)	Smooth	4-3/8" (111 mm)	5 lb (2.27 kg)
1672-10	0.37" (9.40 mm)	0.75" (19.05 mm)	10,000 lb (4545 kg)	Knurled	4-3/8" (111 mm)	5 lb (2.27 kg)

Tractel Wire Rope Gripper

The Tractel Wire Rope Gripper with a self-gripping jaw will hold a wire rope at any point along its length or take up the tension while fixing or adjusting the slack end.

- Light alloy body
- Complete with shackle for anchoring
- Spring-operated jaw for automatic gripping
- Breech loading



Model	Range of Wire Rope in (mm)	Weight (lbs) (kg)	Capacity (lbs) (kg)	Breaking Load lb (kg)
G2	3/32"-5/16" (2-8 mm)	.64 lb (.28 kg)	900 lb (400 kg)	3,500 lb (1,600 kg)
G3	5/16"-9/16" (7-15 mm)	1.25 lb (.56 kg)	1,300 lb (600 kg)	4,100 lb (1,900 kg)
G4	9/16"-11/16" (14-18 mm)	1.3 lb (.59 mm)	1,750 lb (800 kg)	4,400 lb (2,000 kg)

Tractel Con-Klam Wire Rope Gripper

The Coni-Klam Wire Rope Gripper is held by a pair of slightly serrated jaws providing a positive lock by a self-gripping wedge.

- Manufactured in forged steel
- Breech loading
- Immediate adjustment to the required positions
- Does not damage the rope
- High safety factor



Model	Range of Wire Rope in (mm)	Capacity (lbs) (kg)	Weight w/o Shackle (lbs) (kg)	Weight w/ Shackle (lbs) (kg)
EC10	3/16"-3/8" (5-10 mm)	2,200 lb (1,000 kg)	2.6 lb (1.2 kg)	3.5 lb (1.6 kg)
EC14	7/16"-9/16" (10.5-14 mm)	4,400 lb (2,000 kg)	5.7 lb (2.6 kg)	3.7 lb (8.1 kg)
EC21	5/8"-13/16" (15-21 mm)	6,600 lb (3,000 kg)	11.9 lb (5.4 kg)	7.5 lb (16.5 kg)