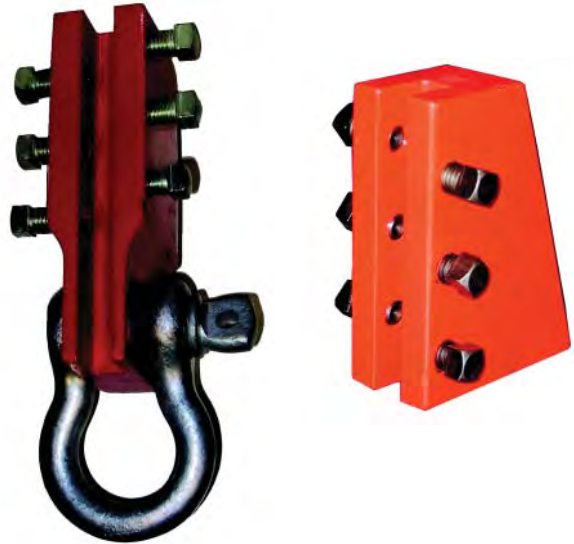




Rail Blocks

Rail Block (left) and **Rail Block with Clevis** (right) are used to hang the elevator car or counter weight at any position in the hoistway. The maximum, safe working load limit is 25,000 lb per pair of Rail Blocks when the bolts have been properly installed to 70 ft-lbs of torque. Rail blocks are available for three rail sizes (5/8" rail, 3/4" rail, & 1-1/8" / 1-1/4" rail).

Rail Blocks MUST be used in pairs.



Seizing Wire

Seizing Wire (sometimes called "Mousing Wire") has a variety of uses where light-duty or temporary securement is required. The 21 gauge (0.0286" dia.) dark annealed steel wire is handy for whipping, bailing, binding, mousing, seizing, and other fastening applications.

These 1/2 lb spools contain approximately 186.5 ft of wire.

