



Hoist Rings

En-Guard - Hoist Rings

- Forged High Strength 4140 Alloy Steel Hoist Ring
- Corrosion Resistant Plating - Electroless Nickel (AMS-C-26074 Class 1 Grade B)
- 200% Proof Load Tested (Certificate of Test available upon request)
- Individually Serialized
- Other Standard and Metric Sizes Available
- Customizations Available
- Select Sizes from 800 - 30,000 lbs. WLL In Stock
- Swivels 360°, Pivots 180°
- Easily disassembled & reassembled for inspection
- Complies with ASME-B30.26
- 5:1 Design Factor
- Unlike eye bolts, swivel hoist rings maintain full capacity at 0-90 degrees from the bolt axis
- Manufactured in Valdosta, GA, USA

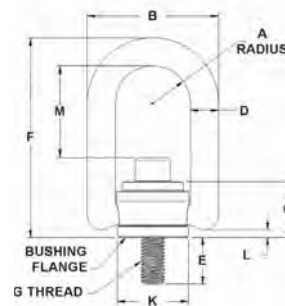


Material: Forged High Strength 4140 Alloy Steel.

Design factor: Minimum Design Factor = 5:1

Specifications: Meets ASME B30.26

Finish: Corrosion Resistant Plating - Electroless Nickel



Inch

Part Number +	Rated Load (lbs)	A	B	C	D	E +/- .12	F	G	K	L	M	TL *(ft/lbs)	Weight (lbs)
EN33212	800	0.65	2.29	0.96	0.44	0.56	3.23	5/16-18	1.25	0.15	1.51	7	0.52
EN33312	1000	0.65	2.29	0.96	0.44	0.56	3.23	3/8-16	1.25	0.15	1.45	12	0.56
EN33512	2500	1	3.5	1.5	0.75	0.75	5.31	1/2-13	1.89	0.17	2.56	28	1.71
EN33614	4000	1	3.5	1.5	0.75	1	5.31	5/8-11	1.89	0.17	2.44	60	1.78
EN33714	5000	1	3.5	1.5	0.75	1	5.31	3/4-10	1.89	0.17	2.31	100	1.89
EN33102	7000	1.5	5.1	2.05	1	1.20	7.37	3/4-10	2.81	0.18	3.57	100	7.23
EN33104	8000	1.5	5.1	2.05	1	0.95	7.37	7/8-9	2.81	0.18	3.32	160	7.33
EN33105	10000	1.5	5.1	2.05	1	1.45	7.37	1" - 8	2.81	0.18	3.2	230	7.57
EN33402	15000	2	6.75	2.87	1.25	1.88	9.22	1-1/4" - 7	3.88	0.18	3.74	470	15.74
EN33424	24000	2	6.75	2.87	1.25	2.63	9.22	1-1/2" - 6	3.88	0.32	3.49	800	18.1
+EN33427	30000	2	6.75	2.87	1.25	2.96	9.22	2" - 4-1/2	3.88	0.32	3.49	1100	22.9

Metric

Part Number	Rated Load (kg)	A	B	C	D	E +/-3.0	F	G	K	L	M	TL *(nM)	Weight (kg)
EN34312	450	16.5	58.2	24.4	11.1	16	82	M10 x 1.5	31.8	4	36.5	16	0.25
EN34515	1050	25.4	88.9	38.1	19.1	25	134.9	M12 x 1.75	48	4.4	65	37	0.78
EN34518	1500	25.4	88.9	38.1	19.1	25	135.2	M14 x 2.0	48	4.4	65.3	45	0.79
EN34614	1900	25.4	88.9	38.1	19.1	25	134.9	M16 x 2.0	48	4.4	62	80	0.81
3N34714	2200	25.4	88.9	38.1	19.1	25	134.6	M20 x 2.5	48	4.4	58.7	135	0.86
EN34102	4200	35.6	129.5	52.1	25.4	28	187.2	M24 x 3.0	71.4	4.6	85.7	311	3.29
EN34105	4500	35.6	129.5	52.1	25.4	38	187.2	M30 x 3.5	71.4	4.6	79.7	311	3.44

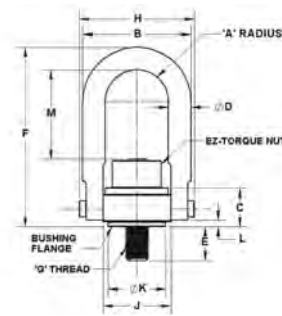
+ Supplied with stud and nut. * Recommended Torque Load. ** Plating threads may subject threads to not meet standard thread tolerances.



EZ-Torque™ Hoist Rings

Exclusively from ADB® - the world's largest manufacturer of Safety Hoist Rings

- ADB®'s EZ-Torque® Hoist Ring eliminates the need of locating and using expensive hydraulic tensioners or torque multipliers.
- For example, a 200,000 lb. WLL Hoist Ring requires the mounting bolt to be torqued to 19,800 lbs-ft. while ADB®'s EZ-Torque® requires only a standard torque wrench and 193 lbs-ft of torque per screw.



FITTINGS & BLOCKS

Inch All dimensions approximate - variations do not effect use or safety factor.

Part Number	Rated Load (lbs)	A	B	C	D	E +/- .12	F	G	H	J	K	L	M	TL (ft/lb)	Easy-Torque (ft/lb)*	Weight (lbs)
23490	15,000	1.75	6.0	2.11	1 1/4	1.89	8.73	1-1/4"-7	6.50	3.76	3.20	0.35	3.88	470	10	16.00
23494	24,000	2.25	8.0	2.81	1 3/4	2.70	12.47	1-1/2"-6	8.55	4.87	4.20	0.47	6.12	800	18	37.75
23290	30,000	2.25	8.0	2.81	1 3/4	2.96	12.47	2"-4-1/2	8.55	4.87	4.20	0.47	6.12	1100	23	39.00
23590	50,000	3.00	10.5	4.09	2 1/4	4.00	16.87	2-1/2"-8	11.67	6.52	5.75	1.12	7.73	2100	49	92.00
23592	50,000	3.00	10.5	4.09	2 1/4	4.00	16.87	2-1/2"-4	11.67	6.52	5.75	1.12	7.73	2100	49	92.00
23690	75,000	3.75	13.0	5.27	2 3/4	5.20	19.50	3"-4	14.15	8.10	7.25	1.00	8.53	4300	92	174.60
23790	100,000	4.00	14.5	6.06	3 1/4	7.00	22.09	3-1/2"-4	15.90	8.60	7.75	1.09	9.28	6600	98	246.94
23792	150,000	5.00	18.0	7.50	4	8.50	27.38	4 1/4"-4	19.69	10.75	9.87	1.33	12.93	12000	123	527.00
23794	200,000	6.00	22.0	9.00	5	9.00	33.00	5"-4	24.00	13.00	12.38	1.88	15.00	19800	193	763.00
23798	250,000	6.00	22.0	9.00	5	9.00	33.00	6"-4	24.00	13.00	12.38	1.88	15.00	29000	207	841.00

* Recommended Torque Load per each installation bolt. - Larger WLL available upon request.

Metric All dimensions approximate - variations do not effect use or safety factor. Dimensions are in millimeters.

Part Number	Rated Load (kg)	A	B	C	D	E +/- 3.0	F	G	H	J	K	L	M	TL (Nm)	EZ-Torque* (Nm)*	Weight (kg)
24490	7,000	44.5	152.4	53.6	31.8	66	221.7	M30x3.5	165.1	95.5	81.3	8.9	106.3	637.2	13.5	7.26
24494	11,000	57.2	203.2	71.4	44.5	69	316.7	M36x4.0	217.2	123.7	106.7	11.9	164.8	1085.5	20.8	17.13
24498	12,500	57.2	203.2	71.4	44.5	79	316.7	M42x4.5	217.2	123.7	106.7	11.9	158.8	1085.5	21.6	17.13
24290	13,500	57.2	203.2	71.4	44.5	79	316.7	M48x5.0	217.2	123.7	106.7	11.9	152.8	1085.5	21.3	17.69
24592	22,000	76.2	266.7	104.0	57.2	102	428.5	M64x6.0	296.4	165.6	146.1	28.4	203.3	2847.5	53.9	41.73
24690	31,500	95.2	330.2	133.9	69.8	132	495.3	M72x6.0	368.3	205.7	184.1	25.4	215.4	5670.0	124.7	79.20
24790	51,000	101.6	368.3	153.9	82.5	178	561.1	M90x6.0	403.9	218.4	196.8	27.7	235.7	9560.0	132.8	112.01

* Recommended Torque Load per each installation bolt. - Larger WLL available upon request.



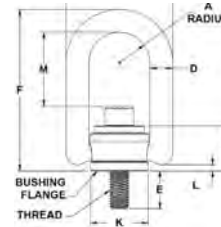
Heavy Duty® Hoist Rings

- **Working Load Limit:** Complete Range through 30,000 lbs.
- **Material:** Forged High Strength 41140 alloy.
- **Range of movement:** Pivot 180°, Swivel 360° Under Load.
- **Design Factor:** Minimum of 5:1.
- Meets Military Specification No. MIL-STD 1365(11) or MIL-STD 209C.
- Meets manufacturing and design requirements of ASME-B30.26 and MIL-STD 209.
- Magnetic Particle Inspected Per ASTM 1444.
- Black oxide coated.
- Each Individually Serial Numbered.

Inch

Part Number	Rated Load	A	B	C	D	E +/- .12	F	G	K	L	M	TL* ft/lb	Weight (lbs)
33112	550	.65	2.29	.96	.44	.56	3.23	1/4-20	1.25	0.15	1.57	5	.50
33212	800	.65	2.29	.96	.44	.56	3.23	5/16-18	1.25	0.15	1.51	7	.52
33213	800	.65	2.29	.96	.44	.56	3.23	5/16-24	1.25	0.15	1.51	7	.52
33314	800	.65	2.29	.96	.44	1.06	3.23	5/16-18	1.25	0.15	1.51	7	.54
33312	1000	.65	2.29	.96	.44	.56	3.23	3/8-16	1.25	0.15	1.45	12	.56
33313	1000	.65	2.29	.96	.44	.56	3.23	3/8-24	1.25	0.15	1.45	12	.56
33514	1000	.65	2.29	.96	.44	1.06	3.23	3/8-16	1.25	0.15	1.45	12	.58
33316	2500	.65	2.29	.96	.44	1.06	3.23	1/2-13	1.25	0.15	1.45	25	.60
33317	2500	.65	2.29	.96	.44	1.06	3.23	1/2-20	1.25	0.15	1.45	25	.60
33512	2500	1.00	3.50	1.50	.75	.75	5.31	1/2-13	1.89	0.17	2.56	28	1.71
*33513	2500	1.00	3.50	1.50	.75	.75	6.87	1/2-13	1.89	0.17	4.12	28	2.04
33515	2500	1.00	3.50	1.50	.75	1.00	5.31	1/2-13	1.89	0.17	2.56	28	1.72
*33505	2500	1.00	3.50	1.50	.75	1.00	6.87	1/2-13	1.89	0.17	4.12	28	2.05
33516	2500	1.00	3.50	1.50	.75	1.25	5.31	1/2-13	1.89	0.17	2.56	28	1.82
*33517	2500	1.00	3.50	1.50	.75	1.25	6.87	1/2-13	1.89	0.17	4.12	28	2.15
33612	4000	1.00	3.50	1.50	.75	.75	5.31	5/8-11	1.89	0.17	2.44	60	1.76
*33613	4000	1.00	3.50	1.50	.75	.75	6.87	5/8-11	1.89	0.17	4	60	2.09
33614	4000	1.00	3.50	1.50	.75	1.00	5.31	5/8-11	1.89	0.17	2.44	60	1.78
*33604	4000	1.00	3.50	1.50	.75	1.00	6.87	5/8-11	1.89	0.17	4	60	2.11
33615	4000	1.00	3.50	1.50	.75	1.25	5.31	5/8-11	1.89	0.17	2.44	60	1.88
*33616	4000	1.00	3.50	1.50	.75	1.25	6.87	5/8-11	1.89	0.17	4	60	2.21
33714	5000	1.00	3.50	1.50	.75	1.00	5.31	3/4-10	1.89	0.17	2.31	100	1.89
*33715	5000	1.00	3.50	1.50	.75	1.00	6.87	3/4-10	1.89	0.17	3.87	100	2.22
33716	5000	1.00	3.50	1.50	.75	1.50	5.31	3/4-10	1.89	0.17	2.31	100	202
*33717	5000	1.00	3.50	1.50	.75	1.50	6.87	3/4-10	1.89	0.17	3.87	100	2.35
33108	7000	1.40	5.10	2.05	1.00	.95	7.37	3/4-10	2.81	0.18	3.57	100	7.20
*33168	7000	1.40	5.10	2.05	1.00	.95	9.00	3/4-10	2.81	0.18	5.20	100	7.93
33102	7000	1.40	5.10	2.05	1.00	1.20	7.37	3/4-10	2.81	0.18	3.57	100	7.23
*33162	7000	1.40	5.10	2.05	1.00	1.20	9.00	3/4-10	2.81	0.18	5.20	100	7.96
33103	7000	1.40	5.10	2.05	1.00	1.45	7.37	3/4-10	2.81	0.18	3.57	100	7.25
*33163	7000	1.40	5.10	2.05	1.00	1.45	9.00	3/4-10	2.81	0.18	5.20	100	7.98
33104	8000	1.40	5.10	2.05	1.00	.95	7.37	7/8-9	2.81	0.18	3.32	160	7.33
*33164	8000	1.40	5.10	2.05	1.00	.95	9.00	7/8-9	2.81	0.18	4.95	160	8.06
33101	8000	1.40	5.10	2.05	1.00	1.20	7.37	7/8-9	2.81	0.18	3.32	160	7.33
*33161	8000	1.40	5.10	2.05	1.00	1.20	9.00	7/8-9	2.81	0.18	4.95	160	8.06
33105	10000	1.40	5.10	2.05	1.00	1.45	7.37	1"-8	2.81	0.18	3.20	230	7.57
*33165	10000	1.40	5.10	2.05	1.00	1.45	9.00	1"-8	2.81	0.18	4.82	230	8.30
33106	10000	1.40	5.10	2.05	1.00	1.20	7.37	1"-8	2.81	0.18	3.20	230	7.63
*33166	10000	1.40	5.10	2.05	1.00	1.20	9.00	1"-8	2.81	0.18	4.82	230	8.36
33107	10000	1.40	5.10	2.05	1.00	2.20	7.37	1"-8	2.81	0.18	3.20	230	7.81
*33167	10000	1.40	5.10	2.05	1.00	2.20	9.00	1"-8	2.81	0.18	4.82	230	8.54
33402	15000	2.00	6.75	2.87	1.25	1.88	9.22	1 1/4"-7	3.88	0.32	3.74	470	15.74
33401	15000	2.00	6.75	2.87	1.25	2.63	9.22	1 1/4"-7	3.88	0.32	3.74	470	16.0
+33420	20000	2.00	6.75	2.87	1.25	2.63	9.22	1 3/8"-6	3.88	0.32	3.62	670	17.2
33424	24000	2.00	6.75	2.87	1.25	2.63	9.22	1 1/2"-6	3.88	0.32	3.49	800	18.1
+33427	30000	2.00	6.75	2.87	1.25	2.96	9.22	2" 4-1/2	3.88	0.32	3.49	1100	22.9
+33432	30000	2.00	6.75	2.87	1.25	2.96	9.22	2"-8	3.88	0.32	3.49	1100	22.9

+ Supplied with stud and nut - Long Bar Models * Recommended Torque Load
 For load ranges of 50,000 to 250,000 lbs. refer to our Safety Engineered Hoist Rings.
 Heavy Duty® Hoist Rings are completely Interchangeable with Safety Engineered Hoist Rings.

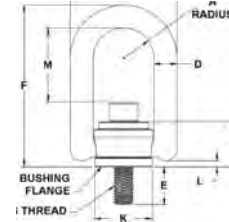




Heavy Duty Hoist Rings - METRIC



- **Material:** Forged High strength 4140 alloy steel.
- **Range of Movement:** Pivot 180°, Swivel 360° Under Load.
- **Minimum Design Factor** is 5:1 .
- Meets manufacturing and design requirements of ASME-B30.26 and MIL-STD 209.
- Magnetic Particle Inspected Per ASTM 1444.
- Black oxide coated.
- Each Individually Serial Numbered.



Metric

Part Number	Rated Load (kg)	A	B	C	D	E +/- 3.0	F	G	K	L	M	TL* (Nm)	Weight (kg)
34212	400	16.5	58.2	24.4	11.1	16	82.0	M8x1.25	31.8	4.0	38.5	9.5	.24
34214	400	16.5	58.2	24.4	11.1	21	82.0	M8x1.25	31.8	4.0	38.5	9.5	.25
34312	450	16.5	58.2	24.4	11.1	16	82.0	M10x1.5	31.8	4.0	36.5	16.0	.25
34314	450	16.5	58.2	24.4	11.1	26	82.0	M10x1.5	31.8	4.0	36.5	16.0	.26
34515	1050	25.4	88.9	38.1	19.1	25	134.9	M12x1.75	48.0	4.4	65.0	37.0	.78
*34505	1050	25.4	88.9	38.1	19.1	25	174.6	M12x1.75	48.0	4.4	104.7	37.0	.93
34516	1050	25.4	88.9	38.1	19.1	32	134.9	M12x1.75	48.0	4.4	65.0	37.0	.83
*34517	1050	25.4	88.9	38.1	19.1	32	174.6	M12x1.75	48.0	4.4	101.7	37.0	.98
34518	1500	25.4	88.9	38.1	19.1	25	135.2	M14x2.0	48.0	4.4	65.3	45.0	.79
*34519	1500	25.4	88.9	38.1	19.1	25	174.9	M14x2.0	48.0	4.4	105.0	45.0	.95
34520	1500	25.4	88.9	38.1	19.1	32	135.2	M14x2.0	48.0	4.4	65.3	45.0	.84
*34521	1500	25.4	88.9	38.1	19.1	32	174.9	M14 x 2.0	48.0	4.4	105.0	45.0	.98
34614	1900	25.4	88.9	38.1	19.1	25	134.9	M16x2.0	48.0	4.4	62.0	80.0	.81
*34604	1900	25.4	88.9	38.1	19.1	25	174.6	M16x2.0	48.0	4.4	101.7	80.0	.96
34615	1900	25.4	88.9	38.1	19.1	32	134.9	M16x2.0	48.0	4.4	62.0	80.0	.85
*34616	1900	25.4	88.9	38.1	19.1	32	174.6	M16x2.0	48.0	4.4	101.7	80.0	1.00
34714	2200	25.4	88.9	38.1	19.1	25	134.9	M20x2.5	48.0	4.4	58.7	135.0	.86
*34715	2200	25.4	88.9	38.1	19.1	25	174.6	M20x2.5	48.0	4.4	98.4	135.0	1.01
34716	2200	25.4	88.9	38.1	19.1	38	134.9	M20x2.5	48.0	4.4	58.7	135.0	.92
*34717	2200	25.4	88.9	38.1	19.1	38	174.6	M20x2.5	48.0	4.4	98.4	135.0	1.07
34101	3000	35.6	129.5	52.1	25.4	28	187.2	M20x2.5	71.4	4.6	89.7	135.0	3.14
*34161	3000	35.6	129.5	52.1	25.4	28	228.6	M20x2.5	71.4	4.6	131.1	135.0	3.47
34102	4200	35.6	129.5	52.1	25.4	28	187.2	M24x3.0	71.4	4.6	85.7	311.0	3.29
*34162	4200	35.6	129.5	52.1	25.4	28	228.6	M24x3.0	71.4	4.6	127.1	311.0	3.62
34103	4200	35.6	129.5	52.1	25.4	38	187.2	M24x3.0	71.4	4.6	85.7	311.0	3.30
*34163	4200	35.6	129.5	52.1	25.4	38	228.6	M24x3.0	71.4	4.6	127.1	311.0	3.63
34105	4500	35.6	129.5	52.1	25.4	38	187.2	M30x3.5	71.4	4.6	79.7	311.0	3.44
*34165	4500	35.6	129.5	52.1	25.4	38	228.6	M30x3.5	71.4	4.6	79.7	311.0	3.55
34107	4500	35.6	129.5	52.1	25.4	48	187.2	M30x3.5	71.4	4.6	79.7	311.0	3.55
*34167	4500	35.6	129.5	52.1	25.4	48	228.6	M30x3.5	71.4	4.6	121.1	311.0	3.88
34401	7000	50.8	171.5	72.9	31.8	67	234.2	M30x3.5	98.5	8.2	95.0	637.2	7.26
34402	11000	50.8	171.5	72.9	31.8	67	234.2	M36x4.0	98.5	8.2	88.6	1085.5	8.21
+34403	12500	50.8	171.5	72.9	31.8	80	234.2	M42x4.5	98.5	8.2	88.6	1085.5	10.14
+34404	13500	50.8	171.5	72.9	31.8	80	234.2	M48x5.0	98.5	8.2	88.6	1085.5	10.59
+34406	13500	50.8	171.5	72.9	31.8	88	234.2	M56x5.5	98.5	8.2	88.6	1085.5	11.03

+ Supplied with stud and nut * Long Bar Models. Replacement screws are available.

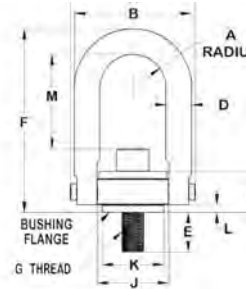




Safety Engineered Hoist Rings - Stainless Steel



- Material: 300 Series Stainless Steel
- Design Factor: 5:1
- Range of Movement: Swivel 360°, Pivot 80° Under Load
- NDT: Liquid Penetrant Tested Per ASTM-E 1417
- Purification Process: Clean & Passivate Per ASTM-A967
- Typical Applications: Use Stainless for Corrosive, Cryogenic or Elevated Temperature Environments
- All dimensions approximate - variations do not affect use or design factor
- Each individually Serial Numbered



Patent No. 5,848,815

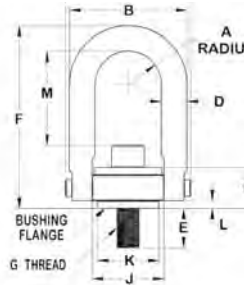
Inch

Part Number	Rated Load (lbs)	A	B	C	D	E +/- .12	F	G	H	J	K	L	M	TL* (ft/lbs)	Weight (lbs)
29050	275	.43	1.61	.71	3/8	.54	2.67	1/4-20	1.84	1.00	.75	.17	1.33	2.5	5 oz.
29051	400	.43	1.61	.71	3/8	.29	2.67	5/16-18	1.84	1.00	.75	.17	1.27	3.5	5 oz.
29052	400	.43	1.61	.71	3/8	.54	2.67	5/16-18	1.84	1.00	.75	.17	1.27	3.5	5 oz.
29053	500	.43	1.61	.71	3/8	.54	2.67	3/8-16	1.84	1.00	.75	.17	1.21	6	5 oz.
29301	1250	.70	2.40	.93	1/2	1.07	3.77	1/2-13	2.58	1.49	1.25	.20	1.84	14	1 lb.
29004	1250	.88	3.25	1.22	3/4	.78	4.78	1/2-13	3.52	1.99	1.50	.16	2.31	14	2 lb. 5 oz.
*29322	1250	.88	3.25	1.22	3/4	.78	6.72	1/2-13	3.52	1.99	1.50	.16	4.25	14	2 lb. 12 oz.
29005	1250	.88	3.25	1.22	3/4	1.03	4.78	1/2-13	3.52	1.99	1.50	.16	2.31	14	2 lb. 5 oz.
*29323	1250	.88	3.25	1.22	3/4	1.03	6.72	1/2-13	3.52	1.99	1.50	.16	4.25	14	2 lb.
29006	1250	.88	3.25	1.22	3/4	1.28	4.78	1/2-13	3.52	1.99	1.50	.16	2.31	14	2 lb. 5 oz.
*29324	1250	.88	3.25	1.22	3/4	1.28	6.72	1/2-13	3.52	1.99	1.50	.16	4.25	14	2 lb. 12 oz.
29001	2000	.88	3.25	1.22	3/4	.78	4.78	5/8-11	3.52	1.99	1.50	.16	2.18	30	2 lb. 7 oz.
29002	2000	.88	3.25	1.22	3/4	1.03	4.78	5/8-11	3.52	1.99	1.50	.16	2.18	30	2 lb. 7 oz.
*29320	2000	.88	3.25	1.22	3/4	1.03	6.72	5/8-11	3.52	1.99	1.50	.16	4.12	30	2 lb. 14 oz.
29003	2000	.88	3.25	1.22	3/4	1.28	4.78	5/8-11	3.52	1.99	1.50	.16	2.18	30	2 lb. 7 oz.
*29321	2000	.88	3.25	1.22	3/4	1.28	6.72	5/8-11	3.52	1.99	1.50	.16	4.12	30	2 lb. 14 oz.
29007	2500	.88	3.25	1.22	3/4	1.03	4.78	3/4-10	3.52	1.99	1.50	.16	2.06	50	2 lb. 9 oz.
*29325	2500	.88	3.25	1.22	3/4	1.03	6.72	3/4-10	3.52	1.99	1.50	.06	4.00	50	3 lb.
29009	2500	.88	3.25	1.22	3/4	1.53	4.78	3/4-10	3.52	1.99	1.50	.16	2.06	50	2 lb. 9 oz.
*29327	2500	.88	3.25	1.22	3/4	1.53	6.72	3/4-10	3.52	1.99	1.50	.16	4.00	50	3 lb.
29102	3500	1.40	4.80	1.71	1"	1.04	6.52	3/4-10	5.14	3.00	2.37	.24	3.06	50	6 lb. 10 oz.
*29329	3500	1.40	4.80	1.71	1"	1.04	8.11	3/4-10	5.14	3.00	2.37	.24	4.65	50	7 lb. 4 oz.
29103	3500	1.40	4.80	1.71	1"	1.54	6.52	3/4-10	5.14	3.00	2.37	.24	3.06	50	6 lb. 10 oz.
*29330	3500	1.40	4.80	1.71	1"	1.54	8.11	3/4-10	5.14	3.00	2.37	.24	4.65	50	6 lb. 10 oz.
29101	4000	1.40	4.80	1.71	1"	1.04	6.52	7/8-9	5.14	3.00	2.37	.24	2.93	80	6 lb. 12 oz.
*29328	4000	1.40	4.80	1.71	1"	1.04	8.11	7/8-9	5.14	3.00	2.37	.24	4.52	80	6 lb. 12 oz.
29105	5000	1.40	4.80	1.71	1"	1.29	6.52	1"-8	5.14	3.00	2.37	.24	2.81	115	7 lb.
*29331	5000	1.40	4.80	1.71	1"	1.29	8.11	1"-8	5.14	3.00	2.37	.24	4.40	115	7 lb.
29106	5000	1.40	4.80	1.71	1"	1.54	6.52	1"-8	5.14	3.00	2.37	.24	2.81	115	7 lb.
*29332	5000	1.40	4.80	1.71	1"	1.54	8.11	1"-8	5.14	3.00	2.37	.24	4.40	115	7 lb.
29107	5000	1.40	4.80	1.71	1"	2.29	6.52	1"-8	5.14	3.00	2.37	.24	2.81	115	7 lb.
*29333	5000	1.40	4.80	1.71	1"	2.29	8.11	1"-8	5.14	3.00	2.37	.24	4.40	115	7 lb.
29401	7500	1.75	6.00	2.11	1-1/4	1.89	8.73	1-1/4"-7	6.50	3.76	3.20	.35	4.12	235	14 lb.
29202	12000	2.25	8.00	2.81	1-3/4	2.70	12.47	1-1/2"-6	8.55	4.87	4.20	.47	6.41	400	33 lb. 12 oz.
+29200	15000	2.25	8.00	2.81	1-3/4	2.96	12.47	2"-4-1/2	8.55	4.87	4.20	.47	5.41	400	36 lb.
+29501	25000	3.00	10.50	4.09	2-1/4	4.00	16.87	2-1/2"-8	11.67	6.52	5.75	1.12	8.03	1050	87 lb. 8 oz.
+29503	25000	3.00	10.50	4.09	2-1/4	4.00	16.87	2-1/2"-4	11.67	6.52	5.75	1.12	8.03	1050	87 lb. 8 oz.
+29600	37500	3.75	13.00	5.27	2-3/4	5.20	19.50	3"-4	14.15	8.10	7.25	1.00	8.48	2150	166 lb.
+29701	5000	4.00	14.50	6.06	3-1/4	7.00	22.09	3-1/2"-4	15.90	8.60	7.75	1.09	9.28	3300	240 lb.

+ Supplied with stud and nut. * Recommended Torque Load.



Safety Engineered Hoist Rings -Stainless Steel Metric



Patent No. 5,848,815

- Hoist Ring Material: 300 Series Stainless Steel
- Design Factor: 5:1
- Range of Movement: Swivel 360°, Pivot 180° Under Load
- NDT: Liquid Penetrant Tested Per ASTM-E 1417
- Purification Process: Clean & Passivate Per ASTM-A967
- Typical Applications: Use Stainless for Corrosive, Cryogenic or Elevated Temperature Environments
- Each Individually Serial Numbered



Metric

Part Number	Rated Load (kg)	A	B	C	D	E +/- 3.0	F	G	H	J	K	L	M	TL* (Nm)	Weight (kg)
29808	200	10.9	40.9	48.0	9.5	17	67.8	M8x1.25	46.7	25.4	19.1	4.3	32.1	4.75	0.14
29810	225	10.9	40.9	18.0	9.5	17	67.8	M10x1.5	46.7	25.4	19.1	4.3	30.2	8.0	0.14
29812	525	22.4	82.5	31.0	19.0	19	121.4	M12x1.75	89.4	50.5	38.0	4.1	59.4	18.5	1.05
*29814	525	22.4	82.5	31.0	19.0	19	170.6	M12x1.75	89.4	50.5	38.0	4.1	108.6	18.5	1.27
29816	950	22.4	82.5	31.0	19.0	24	121.4	M16x2.0	89.4	50.5	38.0	4.1	55.4	40.0	1.11
*29818	950	22.4	82.5	31.0	19.0	24	170.6	M16x2.0	89.4	50.5	38.0	4.1	104.4	40.0	1.33
29820	1100	22.4	82.5	31.0	19.0	30	121.4	M20x2.5	89.4	50.5	38.0	4.1	51.4	67.5	1.16
*29821	1100	22.4	82.5	31.0	19.0	30	170.6	M20x2.5	89.4	50.5	38.0	4.1	100.6	67.5	1.38
29822	1500	35.6	121.2	43.4	25.4	29	165.8	M20x2.5	130.5	76.2	58.7	6.1	77.0	67.5	3.06
*29823	1500	35.6	121.2	43.4	25.4	29	206.7	M20x2.5	130.5	76.2	58.7	6.1	117.9	67.5	3.77
29824	2100	35.6	121.2	43.4	25.4	34	165.8	M24x3.0	130.5	76.2	58.7	6.1	73.0	155.5	3.18
*29826	2100	35.6	121.2	43.4	25.4	34	206.7	M24x3.0	130.5	76.2	58.7	6.1	113.9	155.5	3.89
29830	2250	35.6	121.2	43.4	25.4	54	165.8	M30x3.5	130.5	76.2	58.7	6.1	67.0	155.5	3.30
*29832	2250	35.6	121.2	43.4	25.4	54	206.7	M30x3.5	130.5	76.2	58.7	6.1	109.9	155.5	4.01
29840	3500	44.5	152.4	53.6	31.8	46	221.7	M30x3.5	165.1	95.5	81.3	8.9	106.3	318.6	6.36
+29842	3500	44.5	152.4	53.6	31.8	66	221.7	M30x3.5	165.1	95.5	81.3	8.9	106.3	318.6	6.70
+29850	5500	57.2	203.2	71.4	44.5	69	316.7	M36x4.0	217.2	123.7	106.7	11.9	164.8	542.7	15.34
+29852	6250	57.2	203.2	71.4	44.5	79	316.7	M42x4.5	217.2	123.7	109.7	11.9	158.8	542.7	15.91
+29854	7250	57.2	203.2	71.4	44.5	79	316.7	M48x5.0	217.2	123.7	106.7	11.9	152.8	542.7	16.36
+29860	11000	76.2	266.7	104.0	57.2	102	428.5	M64x6.0	296.4	165.6	146.1	28.4	203.3	1423.7	39.77

+ Supplied with stud and nut. * Recommended Torque Load. - Long Bar Models.
Note: Dimensions are in millimeters.

FITTINGS & BLOCKS