

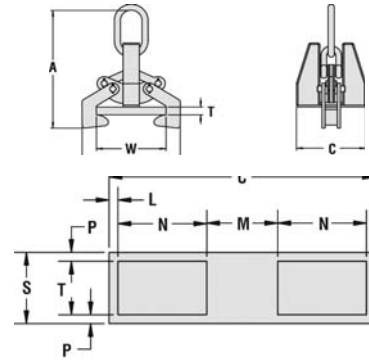


Grabs

Beam Grab

PRODUCT FEATURES:

- Heavy duty design.
- These grabs provide an efficient method for handling wide flange beam sections and plate girders.
- Clamps have a recessed base to accept studs welded to a beam's surface.
- Beam grabs eliminate the need for slings or chokers.
- Use only for vertical lifting.
- For longer beams or girders, use units in pairs in conjunction with a spreader/lifting beam.
- Complies with ASME Standards.

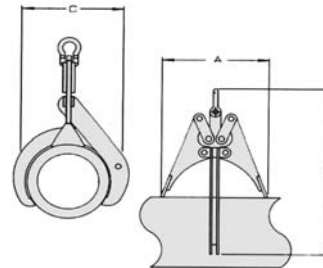


Model Number	Rated Capacity (tons)	Dimensions (in.)											Weight (lbs)		
		A	B	C	Flange Width	Flange Thickness		S	N	T	M	L		P	
						Min.	Max.								
F-5	5	22.7	15.7	11.6	4	1/4	1/4	3	3	2	4.6	.5	.5	68	
					5	1/4	3/8								
					6 -10	1/4	1								
F-15	15	30.1	25.1	17.5	7	1/2	3/4	4	4	2.5	7.3	.9	.8	182	
					8	1/2	1								
					9	1/2	1-1/4								
					10	1/2	1-1/2								
F-25	25	44.8	45.2	24.50	16-17	1-1/4	3	5-1/2	6	4	9.8	1.3	.8	541	
					18 -24	1									
					16 -18	2-1/4									4
F-35	35	52.9	61.6	28.5	20 -22	2	4	6	9.3	4-1/2	8.5	.8	.8	841	
					24	1-3/4									4
					26	1-3/4									4
					28 -36	1									4

Pipe Grab

PRODUCT FEATURES:

- Heavy duty automatic clamping design.
- Outriggers stabilize the pipe during lift.
- No blocking is required, the operator only has to guide the clamp into place. Pipes are handled quickly and efficiently when properly balanced.
- Excellent for cast iron, steel pipe, tubing, and other cylindrical objects.
- Pipe grab sizes listed handle ASA cast iron pipe - standard, extra strong, and double strong (all have same O.D).



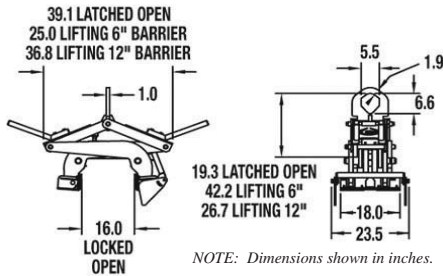
Rated Capacity (lbs)	Cast Iron		Steel		Dimensions in Inches			Weight (lbs)
	Model Number	Pipe O.D. (in.)	Model Number	Pipe O.D. (in.)	A	B	C	
450	C-3	4.0	S-3	3.5	5	10	6	7
600	C-4	4.8	S-4	4.5	8	14	7	9
1000	C-6	6.9	S-6	6.63	11	17	11	15
1400	C-8	9.05	S-8	8.63	13	22	14	25
2000	C-10	11.1	S-10	10.75	15	27	17	47
2500	C-12	13.2	S-12	12.75	18	32	20	72
3500	C-14	15.3	S-14	14.0	22	38	23	105



Model BLG - Barrier Grabs



NEW



PRODUCT FEATURES:

- New, compact & rugged design holds up to the work environment where barriers are used.
- Handles concrete barriers from 6" - 12" nominal width at the top of the barrier.
- Stainless steel Auto-Latch. Auto-Latch mounting insures proper alignment.
- Locating assembly orients tong on barrier without operator intervention.
- Gripping pads pivot to conform with the load. Replaceable polyurethane pads protect barrier.
- Alloy steel dog-point pads bite into painted barrier surfaces (typical in coastal areas).
- Centering guide cut out on grab shoe helps to properly center ton over barrier for a level lift.
- Extended handles on each side keep operator away from load and can be adjusted as needed.
- Lifting eye allows for easy hood attachment, self-centers rigging, and will accommodate a fork.
- Designed and manufactured to ASME B30.20, BTH-1, design category B, service class 3.

Barrier Grab w/Polyurethane Lifting Pads



Specifications

Model Number	Rated Capacity (lbs)	Weight (lbs)
With Polyurethane Lifting Pads		
BLG-4.1/4	8500	602
BLG-7.1/4	14500	652
With Steel 'Dog Point' Lifting Pads		
BLG-4.1/4-DP	8500	602
BLG-7.1/4-DP	14500	652

BELOW THE HOOK



Optional Stabilizing Kit

- Attach two Barrier Grabs, and expand your barrier handling capabilities.
- Handles barriers up to 40' in length.
- Beams can be used for other material handling applications when Barrier Grabs are removed.
- Kit includes Model 20 Lifting Beam & Attaching Hardware - Barrier Grabs sold separately.

Operation

Place tong on barrier, lower crane completely to disengage the Auto-Latch.

Lift and position barrier in desired location.

Lower crane, line must go slack to engage Auto-Latch, lift tong off barrier and Repeat!





Model RR - Manual Rig-Release™ Hook



PRODUCT FEATURES:

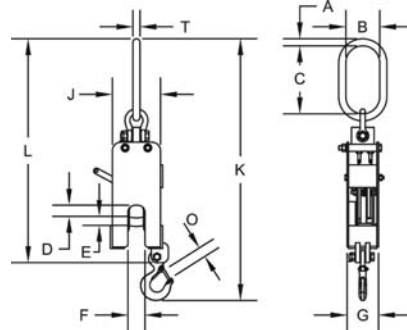


- NEW - Rope Guide allows rigging to be released when hook is either above or beside the operator.
- If the hook is located below the operator please request information on the Upward Pull option.
- Designed for rugged, outdoor use.
- Easy to use - simply rig, lift, set and release.
- LOCK & CAPTURE feature engages with very little weight (see Minimum Chart below).
- Rated load capacity can be lifted from either Lift Arm or the lower Strip Sling Hook.
- Do not exceed rated capacity of hook.
- Oversized bail for easy mounting on crane hook - 5, 10 & 15 ton units provided with fixed bails.
- Designed and manufactured to ASME Standards.

Warning !

Lifting at less than minimum load can result in injury or death.

If minimum load weight is not met, safety mechanism will not engage into the LOCK & CAPTURE position.



SPECIFICATIONS - Manual Release

Model Number	Rated Capacity	Dimensions (in.)								Bail Dimensions (in.)				Weight (lbs)
		D	E	F	G	J	K	L	O	A	B	C	T	
RR-1	1	1.15	0.75	1.25	2.77	4.25	23.10	19.75	0.89	0.63	3.00	6.00	0.63	14
RR-2.5	2.5	1.75	1.00	1.50	4.25	9.56	31.67	26.88	1.09	0.63	3.00	6.00	0.63	45
RR-5	5	1.83	1.50	1.50	5.00	11.13	36.40	30.75	1.36	2.00	4.00	7.00	1.25	110
RR-10	10	2.25	1.75	2.00	6.31	11.00	41.16	32.13	2.08	2.00	4.00	7.00	1.25	200
RR-15	15	3.00	2.50	2.50	6.31	15.00	49.25	39.25	2.27	2.50	5.00	9.00	1.50	325

Larger Capacities Available.

Specifications				Rigging (Minimum Number of Springs)		
Model Number	Rated Capacity (tons)	Minimum Load (lbs)		Recommended Lifting Slings		** Maximum Allowable Rigging Weight (lbs)
		Basket	Choker	Rope Dia. (in)	Basket	Choker
RR-1	1	30	15	3/8	14	7
RR-2.5	2.5	80	40	5/8	28	14
RR-5	5	230	115	7/8	60	30
RR-10	10	230	115	1-1/4	100	50
RR-15	15	400	200	1-1/2	100	50

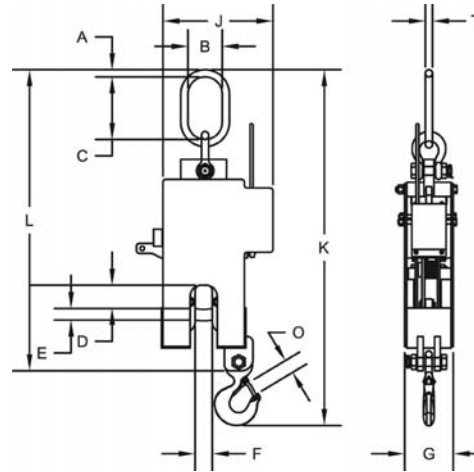
**Note: If maximum allowable rigging weight is exceeded, unit will remain in the LOCK & CAPTURE position and cannot be released. If the maximum allowable rigging weight needs to be increased, additional springs can be added, refer to the Instruction Manual.



Model RR-R - Radio Controlled Release Unit



INSTOCK PROGRAM



SPECIFICATIONS - Radio Release

Model Number	Rated Capacity (tons)	Dimensions (in.)								Bail Dimensions (in.)				Weight (lbs)
		D	E	F	G	J	K	L	O	A	B	C	T	
RR-2.5R	2.5	1.75	1.00	1.50	4.25	9.56	31.15	26.88	1.09	.63	3.00	6.00	0.63	50
RR-5	5	1.83	1.50	1.50	5.00	11.13	36.40	30.75	1.36	2.00	4.00	7.00	1.25	115

BELOW THE HOOK

Specifications				Rigging (Minimum Number of Springs)		
Model Number	Rated Capacity (tons)	Minimum Load (lbs)		Recommended Lifting Slings	** Maximum Allowable Rigging Weight (lbs)	
		Basket	Choker	Rope Diameter (in.)	Basket	Choker
RR-2.5R	2.5	80	40	5/8	28	14
RR-5R	5	250	125	7/8	60	30

Note: If maximum allowable rigging weight is exceeded, unit will remain in the LOCK & CAPTURE position and cannot be released. If the maximum allowable rigging weight needs to be increased, additional springs can be added, refer to the Instruction Manual.

Warning !

Lifting at less than minimum load can result in injury or death.
If minimum load weight is not met, safety mechanism will not engage into the LOCK & CAPTURE position.