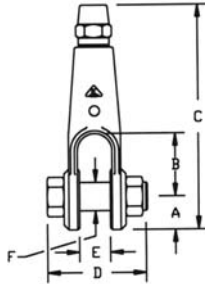




Electroline Fittings

Open Forged Socket

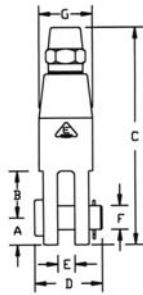


Forged Series: Clevis Socket Specifications

Rope Size	Self- Colored Steel PIN #	Galvanized Steel	A	B	C	D	E	F
1/4	IGD-125-N	GD-125-V*	9/16	1-3/8	4-1/4	1-23/32	17/32	1/2
5/16	IGD-131-N	GD-131-V*	13/16	1-1/2	5-5/16	2-5/32	11/16	5/8
3/8	IGD-137-N	GD-137-V*	13/16	1-1/2	5-5/16	2-5/32	11/16	5/8
7/16	GD-143-N	GD-143-X	1-1/16	2	7-3/16	2-31/32	1	7/8
1/2	GD-150-N	GD-150-X	1-1/16	2	7-3/16	2-31/32	1	7/8
9/16	GD-156-N	GD-156-X	1-1/4	2-1/2	8-5/8	3-7/16	1-1/4	1
5/8	GD-162-N	GD-162-X	1-1/4	2-1/2	8-5/8	3-7/16	1-1/4	1
3/4	GD-175-N	GD-175-X	1-7/16	3	10-3/16	4	1-1/2	1-1/8
7/8	GD-187-N	GD-187-X	1-5/8	2-5/8	11	4-3/8	1-17/32	1-1/4
1	GD-199-N	GD-199-X	1-15/16	2-7/8	12-11/16	4-7/8	1-7/8	1-1/2
1-1/8	GD-1112-N	GD-1112-X	2-3/16	3-5/16	17	5-5/8	1-7/8	1-13/16
1-1/4	GD-1125-N	GD1125-X	2-3/16	3-5/16	17	5-5/8	1-7/8	1-13/16

* Note: Zinc plated only - no galvanized.

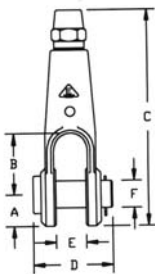
Open Machined Socket



Machined Series: Clevis Socket Specifications

Rope Size	Self Colored Steel PIN #	Zinc Plated Steel	Stainless Steel	A	B	C	D	E	F	G
1/16	ID-106-N	ID-106-V	IS-106	17/64	3/8	2-1/16	43/64	3/16	3/16	1/2
3/32	ID-109-N	ID-109-V	IS-109	5/16	1/2	2-7/16	13/16	1/4	1/4	5/8
1/8	ID-112-N	ID-112-V	IS-112	5/16	1/2	2-7/16	13/16	1/4	1/4	5/8
5/32	ID-115-N	ID-115-V	IS-115	3/8	5/8	2-31/32	63/64	5/16	5/16	3/4
3/16	ID-118-N	ID-118-V	IS-118	3/8	5/8	2-31/32	63/64	5/16	5/16	3/4
7/32	ID-121-N	ID-121-V	IS-121	15/32	3/4	3-23/32	1-9/64	3/8	3/8	15/16
1/4	ID-125-N	ID-125-V	IS-125	15/32	3/4	3-23/32	1-9/64	3/8	3/8	15/16
9/32	ID-128-N	ID-128-V	IS-128	17/32	7/8	4-1/4	1-19/64	3/8	7/16	1-1/16
5/16	ID-131-N	ID-131-V	IS-131	17/32	7/8	4-1/4	1-19/64	3/8	7/16	1-1/16
3/8	ID-137-N	ID-137-V	IS-137	5/8	1	4-27/32	1-31/64	7/16	1/2	1-3/16
7/16	ID-143-N	ID-143-V	IS-143	51/64	1-1/4	5-5/8	1-11/16	7/16	5/8	1-3/8
1/2	ID-150-N	ID-150-V	IS-150	51/64	1-3/8	6-11/32	1-59/64	1/2	11/16	1-9/16
9/16	ID-156-N	ID-156-V	IS-156	1-3/64	1-17/32	7-19/32	2-5/32	11/16	15/16	2
5/8	ID-162-N	ID-162-V	IS-162	1-3/64	1-17/32	7-19/32	2-5/32	11/16	15/16	2
3/4	ID-175-N	ID-175-V	IS-175	1-15/64	1-27/32	8-29/32	2-7/16	3/4	1-1/8	2-5/16
7/8	ID-187-N	ID-187-V	IS-187	1-7/16	1-7/8	10-3/16	2-47/64	13/16	1-1/4	2-5/8
1	ID-199-N	ID-199-V	IS-199	1-3/4	2-1/4	12	3-7/64	15-16	1-1/2	3

Extra-Strength Open Forged Socket



Extra Strength Series: Clevis Socket with Pin and Cotter Pin Specifications

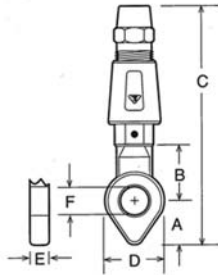
Rope Size	Galvanized Steel	A	B	C	D	E	F
7/16	PD-143X	1-1/16	2	7-3/16	2-19/32	1	1
1/2	PD-150-X	1-1/16	2	7-3/16	2-19/32	1	1
9/16	PD-156-X	1-1/4	2-21/2	8-5/8	3-11/64	1-1/4	1-13/16
5/8	PD-162-X	1-1/4	2-1/2	8-5/8	3-11/64	1-1/4	1-3/16
3/4	PD-175-X	1-7/16	3	10-3/16	3-11/16	1-1/2	1-3/8
7/8	PD187-X	1-15/16	2-7/8	12-11/16	4-7/8	1-7/8	1-1/2
1	PD-199-X	2-3/16	3-5/16	17	5-5/8	1-15/16	1-13/16

Note: Extra Strength Fittings rated at 100% RBS of Extra - Improved Plow Steel Wire Rope. Larger Sizes Available - Please Contact Factory.



Closed Forged Socket

Forged Series: Eye Socket Specifications

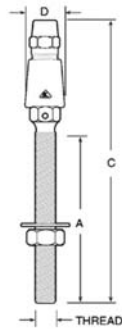


Rope Size	Self Colored Steel PIN #	Galvanized Steel	A	B	C	D	E	F
1/4	GD-225-N	GD-225-X	1-1/16	1-3/8	5-5/32	1-5/16	1/2	17/32
5/16	GD-231-N	GD-231-X	1-1/16	1-3/8	5-3/8	1-5/16	9/16	21/32
3/8	GD-237-N	GD-237-X	1-1/16	1-3/8	5-1/2	1-5/16	9/16	21/32
7/16	GD-243-N	GD-243-X	1-5/16	1-11/16	6-7/8	1-3/4	3/4	29/32
1/2	GD-250-N	GD-250-X	1-5/16	1-11/16	6-7/8	1-3/4	3/4	29/32
9/16	GD-256-N	GD-256-X	1-1/2	2-9/16	9-3/16	2-1/4	7/8	1-1/32
5/8	GD-262-N	GD-262-X	1-1/2	2-9/16	9-3/16	2-1/4	7/8	1-1/32
3/4	GD-275-N	GD-275-X	1-11/16	2-3/8	9-1/2	2-1/4	1-1/16	1-5/32
7/8	IGD-287-N	IGD-287-V*	1-7/8	2-13/16	11-1/8	2-5/8	1-5/16	1-9/32
1	IGD-299-N	IGD-299-V*	2-1/4	3-1/4	13-7/16	3	1-9/16	1-17/32

*Note: Zinc plated only.

Forged Threaded Stud

Forged Series: Stud Socket Specifications



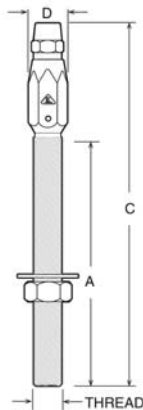
Rope Size	Galvanized Steel	A	C	Coarse Thread	D
1/8	IGD-312-V	2-1/2	4-1/8	1/4-20	5/8
3/16	IGD-318-V	4-1/8	6-5/16	3/8-16	3/4
1/4	GD-325-X	4-3/16	7-3/8	1/2-13	1
5/16	GD-331-X	4-3/16	7-9/16	1/2-13	1
3/8	GD-337-X	4-1/2	8-1/4	5/8-11	1-1/8
7/16	GD-343-X	6-3/8	10-15/16	3/4-10	1-1/2
1/2	GD-350-X	6-3/8	10-15/16	3/4-10	1-1/2
9/16	GD-356-X	8-1/8	13-7/8	7/8-9	1-3/4
5/8	GD-362-X	8-1/8	13-7/8	7/8-9	1-3/4
3/4	GD-375-X	8-5/8	16-1/8	1-1/8-7	2-3/16
7/8	GD-387-X	9	17-3/16	1-1/4-7	2-5/8
1	GD-399-N	12-1/8	22-5/16	22-5/16	3

* Note: For all other stud dimensions, consult factory.

FITTINGS & BLOCKS

Machined Threaded Stud

Machined Series: Stud Specifications

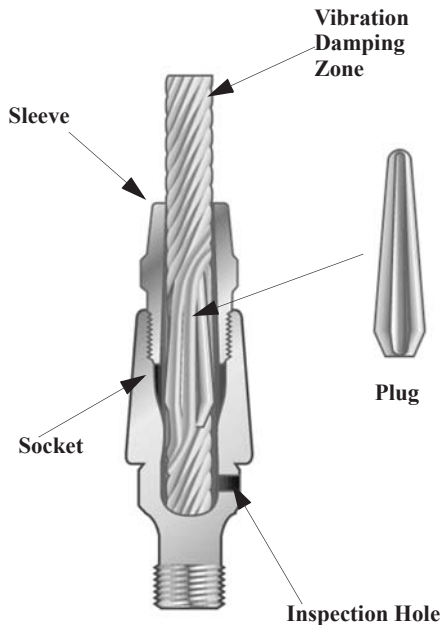


Rope Size	Self Colored Steel PIN #	Zinc Plated Steel	Stainless Steel	A	C	Fine Thread	D
1/16	ID-306-N	ID-306-V	IS-306	1-19/32	3-1/32	10-32	1/2
3/32	ID-309-N	ID-309-V	IS-309	1-7/8	3-1/2	1/4-28	9/16
1/8	ID-312-N	ID-312-V	IS-312	1-7/8	3-1/2	1/4-28	9/16
5/32	ID-315-N	ID-315-V	IS-315	2-3/16	4-3/16	3/8-24	3/4
3/16	ID-318-N	ID-318-V	IS-318	2-3/16	4-3/16	3/8-24	3/4
7/32	ID-321-N	ID-321-V	IS-321	4-9/16	7-1/16	1/2-20	7/8
1/4	ID-325-N	ID-325-V	IS-325	4-9/16	7-1/16	1/2-20	7/8
9/32	ID-328-N	ID-328-V	IS-328	4-9/16	7-1/2	5/8-18	1
5/16	ID-331-N	ID-331-V	IS-331	4-9/16	7-1/2	5/8-18	1
3/8	ID-337-N	ID-337-V	IS-337	4-15/16	8-3/16	3/4-16	1-1/8
7/16	ID-343-N	ID-343-V	IS-343	6-15/16	11	7/8-14	1-7/16
1/2	ID-350-N	ID-350-V	IS-350	6-15/16	11	7/8-14	1-7/16
9/16	-	ID-356-V	IS-356	8-5/8	16-3/16	1-1/8-7	2-3/16
5/8	-	ID-362-V	IS-362	8-5/8	16-3/16	1-1/8-7	2-3/16
3/4	-	ID-375-V	IS-375	9-1/4	16-3/4	1-1/4-7	2-1/2
7/8	-	ID-387-V	IS-387	9-3/4	19-7/8	1-1/2-6	3
1	-	ID-399-V	IS-399	12-3/4	23-7/64	1-3/4-5	3
1-1/8	-	IGD-3112-V	IGS-3312	13-1/8	25-9/16	1-3/4-5	3
1-1/4	-	IGD-3125-V	IGS-3125	13-1/8	26-11/16	1-3/4-5	3-1/2
1-3/8	-	IGS-3137-V	IGS-3137	16-5/8	34-7/16	2-4-1/2	4
1-1/2	-	IGS-3150-V	IGS-3150	16-5/8	34-7/16	2-4-1/2	4

* Note: For other stud dimensions, consult factory.



TYPICAL ASSEMBLY



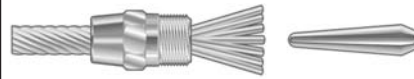
Electroline fittings are the first real advance in connecting practices since the development of wire rope. These fittings are remarkably compact assemblies of three basic units:

1. The SLEEVE, which slips over the end of the rope.
2. The PLUG, which is inserted to separate and hold the rope strands in the sleeve.
3. The covering SOCKET

The combination of these three units literally locks the rope into a strong, solid assembly.



SLEEVE: Wire rope passed through sleeve.



SLEEVE & PLUG: Strands fanned out to insert plug.



SLEEVE, PLUG & SOCKET: Plug driven in and strands closed to apply socket.



COMPLETED ASSEMBLY: With socket applied, twisted strands are visible through inspection hole.

SAFE WORKING LOADS & IMPORTANT INFORMATION

Rope fittings are designed for linear applications only. Never subject Electroline rope fittings to angular loads. Follow rope manufacturers' recommendations regarding the suitability of the rope on angled surfaces such as sheaves and pulleys.

The strength of an assembly greatly depends on the type of rope used. When using Electroline terminations in an assembly, the rope is often the weakest component. Therefore, it is important to follow the rope manufacturers specifications regarding use, care, and suitability of the assembly. Electroline terminations should be inspected for deformation and unusual wear every time the rope is inspected.

The rated assembly breaking strengths provided with Electroline wire rope part numbers in this catalog are typical for 6 x 19 IWRC (1 x 19 IWRC in smaller sizes) carbon steel ropes. Due to customer demand regarding dimensions, open body turnbuckles (XD series), fittings with hooks, and machined eyes (I-200 series) are rated to Improved Plow Steel (IPS) standards. These fittings can be modified to Extra Improved Ploy Steel (EIPS) standards if requested. All other carbon steel fittings conform to EIPS standards.

Stainless steel fittings will hold 100% of the rope's RBS. However, if loaded to 85% of the rope RBS, the fitting will yield and deform. This may make determination impossible.

Machined fittings are at least 1.3 times stronger than the corresponding steel rope. Forged fittings, except studs, are 2.0 times stronger.

Items specified as hot-dipped galvanized include a zinc, electro-plated sleeve.